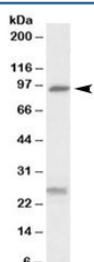


## SLC4A11 Antibody (R34309)

Catalog No.	Formulation	Size
R34309-100UG	0.5 mg/ml in 1X TBS, pH7.3, with 0.5% BSA (US sourced) and 0.02% sodium azide	100 ug

[Bulk quote request](#)

Availability	1-3 business days
Species Reactivity	Human, Mouse, Rat
Predicted Reactivity	Cow, Dog
Format	Antigen affinity purified
Clonality	Polyclonal (goat origin)
Isotype	Goat Ig
Purity	Antigen affinity
Gene ID	83959
Applications	Western Blot : 0.3-1ug/ml ELISA (peptide) LOD : 1:32000
Limitations	This SLC4A11 antibody is available for research use only.



Western blot testing of human kidney lysate with SLC4A11 antibody at 0.3ug/ml. The expected ~95kDa band and the additional ~26kDa band are both blocked by the immunizing peptide.

## Description

Additional name(s) for this target protein: Solute carrier family 4, sodium borate transporter, member 11, BTR1

## Application Notes

Optimal dilution of the SLC4A11 antibody should be determined by the researcher.

## Immunogen

Amino acids HTSRKYLKLKNFKEE were used as the immunogen for this SLC4A11 antibody.

## **Storage**

Aliquot and store the SLC4A11 antibody at -20oC.