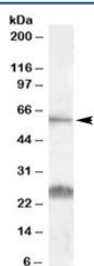


SLC47A1 Antibody (R34990)

Catalog No.	Formulation	Size
R34990-100UG	0.5 mg/ml in 1X TBS, pH7.3, with 0.5% BSA (US sourced) and 0.02% sodium azide	100 ug

[Bulk quote request](#)

Availability	1-3 business days
Species Reactivity	Human
Format	Antigen affinity purified
Host	Goat
Clonality	Polyclonal (goat origin)
Isotype	Goat Ig
Purity	Antigen affinity
Gene ID	55244
Applications	Western Blot : 0.1-0.3ug/ml ELISA (peptide) LOD : 1:64000
Limitations	This SLC47A1 antibody is available for research use only.



Western blot testing of human kidney lysate with SLC47A1 antibody at 0.1ug/ml. The expected ~60kDa band and the additional ~26kDa band are both blocked by the immunizing peptide.

Description

Additional name(s) for this target protein: Solute carrier family 47, member 1

Application Notes

Optimal dilution of the SLC47A1 antibody should be determined by the researcher.

Immunogen

Amino acids PEHPQDGAKLSRKQ were used as the immunogen for this SLC47A1 antibody.

Storage

Aliquot and store the SLC47A1 antibody at -20oC.