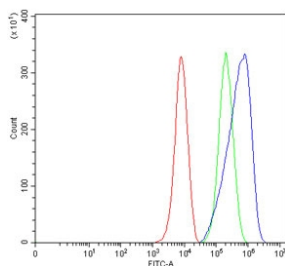


Slc3a2 Antibody / Cd98 (RQ7314)

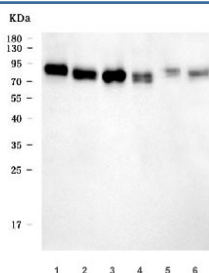
Catalog No.	Formulation	Size
RQ7314	0.5mg/ml if reconstituted with 0.2ml sterile DI water	100 ug

[Bulk quote request](#)

Availability	1-3 business days
Species Reactivity	Mouse, Rat
Format	Antigen affinity purified
Host	Rabbit
Clonality	Polyclonal (rabbit origin)
Isotype	Rabbit IgG
Purity	Antigen affinity purified
Buffer	Lyophilized from 1X PBS with 2% Trehalose
UniProt	P10852
Applications	Western Blot : 0.5-1ug/ml Flow Cytometry : 1-3ug/million cells Direct ELISA : 0.1-0.5ug/ml
Limitations	This Slc3a2 antibody is available for research use only.



Flow cytometry testing of mouse RAW264.7 cells with Slc3a2 antibody at 1ug/million cells (blocked with goat sera); Red=cells alone, Green=isotype control, Blue= Slc3a2 antibody.



Western blot testing of 1) rat pancreas, 2) rat kidney, 3) mouse pancreas, 4) mouse kidney, 5) mouse testis and 6) mouse NIH 3T3 cell lysate with Slc3a2 antibody. Expected molecular weight: 75-120 kDa depending on glycosylation level.

Description

4F2 cell-surface antigen heavy chain is a protein that in humans is encoded by the SLC3A2 (solute carrier family 3 member 2) gene. Predicted to enable amino acid transmembrane transporter activity and double-stranded RNA binding activity. Predicted to be involved in carboxylic acid transport and viral entry into host cell. Predicted to act upstream of or within response to exogenous dsRNA. Located in apical pole of neuron. Is active in synapse. Is expressed in several structures, including alimentary system; brain; genitourinary system; hemolymphoid system gland; and spinal cord. Orthologous to human SLC3A2 (solute carrier family 3 member 2).

Application Notes

Optimal dilution of the Slc3a2 antibody should be determined by the researcher.

Immunogen

Recombinant mouse protein (amino acids K35-Q497) was used as the immunogen for the Slc3a2 antibody.

Storage

After reconstitution, the Slc3a2 antibody can be stored for up to one month at 4°C. For long-term, aliquot and store at -20°C. Avoid repeated freezing and thawing.