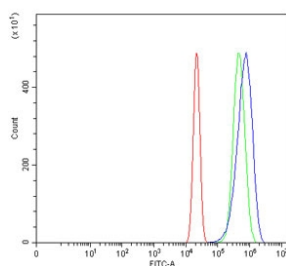


SLC3A1 Antibody / rBAT (RQ7427)

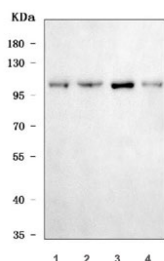
Catalog No.	Formulation	Size
RQ7427	0.5mg/ml if reconstituted with 0.2ml sterile DI water	100 ug

[Bulk quote request](#)

Availability	1-3 business days
Species Reactivity	Human, Monkey, Mouse, Rat
Format	Antigen affinity purified
Host	Rabbit
Clonality	Polyclonal (rabbit origin)
Isotype	Rabbit IgG
Purity	Antigen affinity purified
Buffer	Lyophilized from 1X PBS with 2% Trehalose
UniProt	Q07837
Applications	Western Blot : 0.5-1ug/ml Flow Cytometry : 1-3ug/million cells Direct ELISA : 0.1-0.5ug/ml
Limitations	This SLC3A1 antibody is available for research use only.



Flow cytometry testing of human U-2 OS cells with SLC3A1 antibody at 1ug/million cells (blocked with goat sera); Red=cells alone, Green=isotype control, Blue= SLC3A1 antibody.



Western blot testing of 1) monkey COS-7, 2) human Caco-2, 3) rat NRK and 4) mouse HBZY cell lysate with SLC3A1 antibody. Predicted molecular weight ~79 kDa.

Description

Neutral and basic amino acid transport protein rBAT is a protein that in humans is encoded by the SLC3A1 gene. This gene encodes a type II membrane glycoprotein which is one of the components of the renal amino acid transporter which transports neutral and basic amino acids in the renal tubule and intestinal tract. Mutations and deletions in this gene are associated with cystinuria. Alternatively spliced transcript variants have been described, but their biological validity has not been determined.

Application Notes

Optimal dilution of the SLC3A1 antibody should be determined by the researcher.

Immunogen

E. coli-derived recombinant human protein (amino acids K70-R665) was used as the immunogen for the SLC3A1 antibody.

Storage

After reconstitution, the SLC3A1 antibody can be stored for up to one month at 4°C. For long-term, aliquot and store at -20°C. Avoid repeated freezing and thawing.