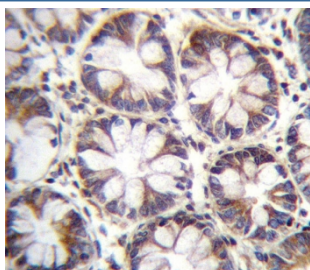


SLC36A1 Antibody (F54640)

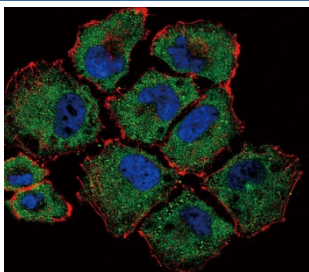
Catalog No.	Formulation	Size
F54640-0.4ML	In 1X PBS, pH 7.4, with 0.09% sodium azide	0.4 ml
F54640-0.08ML	In 1X PBS, pH 7.4, with 0.09% sodium azide	0.08 ml

Bulk quote request

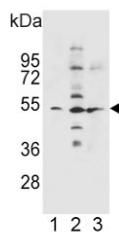
Availability	1-3 business days
Species Reactivity	Human
Format	Purified
Clonality	Polyclonal (rabbit origin)
Isotype	Rabbit Ig
Purity	Antigen affinity purified
UniProt	Q7Z2H8
Localization	Cytoplasmic
Applications	Flow Cytometry : 1:25 (1x10 ⁶ cells) Immunofluorescence : 1:25 Immunohistochemistry (FFPE) : 1:25 Western Blot : 1:500-1:2000
Limitations	This SLC36A1 antibody is available for research use only.



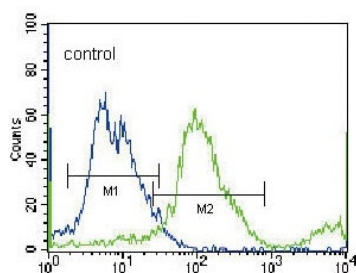
IHC testing of FFPE human rectum tissue with SLC36A1 antibody. HIER: steam section in pH6 citrate buffer for 20 min and allow to cool prior to staining.



Immunofluorescent staining of human NCI-H460 cells with SLC36A1 antibody (green), DAPI nuclear stain (blue) and anti-Actin (red).



Western blot testing of human 1) NCI-H460, 2) K562 and 3) A549 cell lysate with SLC36A1 antibody. Predicted molecular weight ~53 kDa.



Flow cytometry testing of NCI-H460 cells with SLC36A1 antibody; Blue=isotype control, Green= SLC36A1 antibody.

Description

This gene encodes a member of the eukaryote-specific amino acid/auxin permease (AAP) 1 transporter family. The encoded protein functions as a proton-dependent, small amino acid transporter. This gene is clustered with related family members on chromosome 5q33.1.

Application Notes

The stated application concentrations are suggested starting points. Titration of the SLC36A1 antibody may be required due to differences in protocols and secondary/substrate sensitivity.

Immunogen

A portion of amino acids 1-30 from the human protein was used as the immunogen for the SLC36A1 antibody.

Storage

Aliquot the SLC36A1 antibody and store frozen at -20°C or colder. Avoid repeated freeze-thaw cycles.

