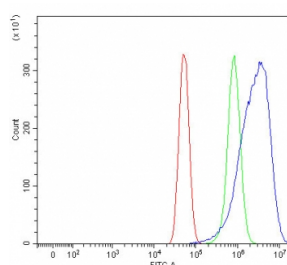


SLC35D1 Antibody / UGTrel7 (RQ7791)

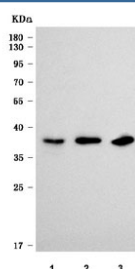
Catalog No.	Formulation	Size
RQ7791	0.5mg/ml if reconstituted with 0.2ml sterile DI water	100 ug

Bulk quote request

Availability	1-3 business days
Species Reactivity	Human, Mouse
Format	Antigen affinity purified
Clonality	Polyclonal (rabbit origin)
Isotype	Rabbit IgG
Purity	Antigen affinity purified
Buffer	Lyophilized from 1X PBS with 2% Trehalose
UniProt	Q9NTN3
Applications	Western Blot : 0.5-1ug/ml Flow Cytometry : 1-3ug/million cells Direct ELISA : 0.1-0.5ug/ml
Limitations	This SLC35D1 antibody is available for research use only.



Flow cytometry testing of human U-87 MG cells with SLC35D1 antibody at 1ug/million cells (blocked with goat sera); Red=cells alone, Green=isotype control, Blue= SLC35D1 antibody.



Western blot testing of 1) human SiHa, 2) human Daudi and 3) mouse thymus tissue lysate with SLC35D1 antibody. Predicted molecular weight ~39 kDa.

Description

Glycosylation of cellular glycoconjugates occurs in the endoplasmic reticulum (ER) and Golgi compartment, and requires transport of nucleotide sugars from the cytosol into the lumen of the ER and Golgi by specific transporters. The protein encoded by this gene resides in the ER, and transports both UDP-glucuronic acid (UDP-GlcA) and UDP-N-acetylgalactosamine (UDP-GalNAc) from the cytoplasm to the ER lumen. It may participate in glucuronidation and/or chondroitin sulfate biosynthesis. Mutations in this gene are associated with Schneckenbecken dysplasia.

Application Notes

Optimal dilution of the SLC35D1 antibody should be determined by the researcher.

Immunogen

E. coli-derived recombinant human protein (amino acids M1-V355) was used as the immunogen for the SLC35D1 antibody.

Storage

After reconstitution, the SLC35D1 antibody can be stored for up to one month at 4°C. For long-term, aliquot and store at -20°C. Avoid repeated freezing and thawing.