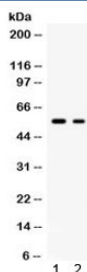


## SLC2A5 Antibody / GLUT5 (R32418)

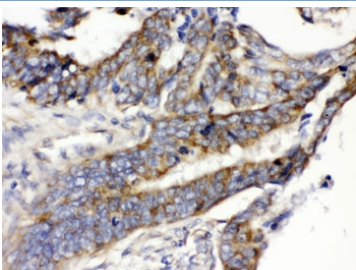
Catalog No.	Formulation	Size
R32418	0.5mg/ml if reconstituted with 0.2ml sterile DI water	100 ug

[Bulk quote request](#)

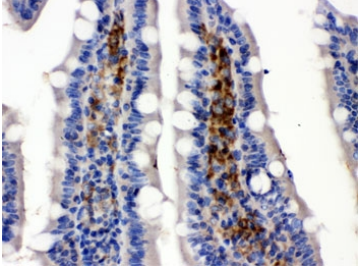
<b>Availability</b>	1-3 business days
<b>Species Reactivity</b>	Human, Rat
<b>Format</b>	Antigen affinity purified
<b>Host</b>	Rabbit
<b>Clonality</b>	Polyclonal (rabbit origin)
<b>Isotype</b>	Rabbit IgG
<b>Purity</b>	Antigen affinity
<b>Buffer</b>	Lyophilized from 1X PBS with 2.5% BSA and 0.025% sodium azide
<b>UniProt</b>	P22732
<b>Localization</b>	Cytoplasmic, membranous
<b>Applications</b>	Western Blot : 0.1-0.5ug/ml IHC (FFPE) : 0.5-1ug/ml
<b>Limitations</b>	This SLC2A5 antibody is available for research use only.



Western blot testing of 1) rat brain and 2) human K562 lysate with SLC2A5 antibody. Expected/observed molecular weight ~55 kDa.



IHC testing of FFPE human intestinal cancer tissue with SLC2A5 antibody. HIER: Boil the paraffin sections in pH 6, 10mM citrate buffer for 20 minutes and allow to cool prior to testing.



IHC testing of FFPE rat intestine with SLC2A5 antibody. HIER: Boil the paraffin sections in pH 6, 10mM citrate buffer for 20 minutes and allow to cool prior to testing.

## Description

SLC2A5, also known as GLUT5 (Glucose transporter 5), is a fructose transporter expressed on the apical border of enterocytes in the small intestine. The GLUT5 gene is located on chromosome 1. GLUT5 allows for fructose to be transported from the intestinal lumen into the enterocyte by facilitated diffusion due to fructose's high concentration in the intestinal lumen. GLUT5 is also expressed in skeletal muscle, testis, kidney, fat tissue, and brain. Fructose malabsorption or Dietary Fructose Intolerance is a dietary disability of the small intestine, where the amount of fructose carrier in enterocytes is deficient.

## Application Notes

Optimal dilution of the SLC2A5 antibody should be determined by the researcher.

## Immunogen

Amino acids QKKDEAAAKKALQTLRGWDSVDREVAEIRQEDEAEKA from the human protein were used as the immunogen for the SLC2A5 antibody.

## Storage

After reconstitution, the SLC2A5 antibody can be stored for up to one month at 4°C. For long-term, aliquot and store at -20°C. Avoid repeated freezing and thawing.