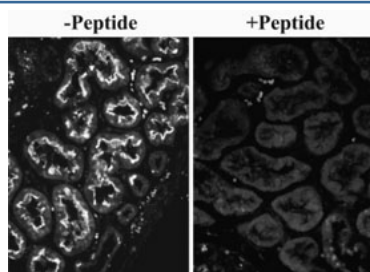


SLC26A6 Antibody (R35838)

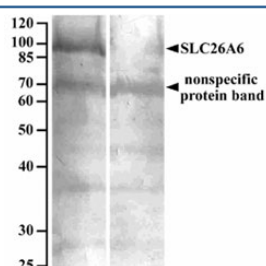
Catalog No.	Formulation	Size
R35838-100UG	0.5 mg/ml in 1X TBS, pH7.3, with 0.5% BSA (US sourced) and 0.02% sodium azide	100 ug

[Bulk quote request](#)

Availability	1-3 business days
Species Reactivity	Human
Format	Antigen affinity purified
Host	Goat
Clonality	Polyclonal (goat origin)
Isotype	Goat Ig
Purity	Antigen affinity
Gene ID	65010
Applications	Western Blot : 10-20 ug/ml Immunohistochemistry (FFPE) : 0.1-0.5ug/ml ELISA (peptide) LOD : 1:8000
Limitations	This SLC26A6 antibody is available for research use only.



IHC overnight staining of FFPE human kidney with SLC26A6 antibody at 0.1ug/ml. Microwaved antigen retrieval with citrate buffer pH 6, CY3-staining.



Western blot of human renal cortical brush-border membrane lysate (90ug protein denatured at 37oC for 30min) with (B) and without (A) blocking with the immunizing peptide. SLC26A6 antibody was used at 10ug/ml and detected by NBT/BCIP.

Description

Additional name(s) for this target protein: Solute carrier family 26, member 6

Application Notes

Optimal dilution of the SLC26A6 antibody should be determined by the researcher.

1. This SLC26A6 antibody is not suitable for mouse sample testing.

Immunogen

Amino acids SAPRTHQWRT were used as the immunogen for this SLC26A6 antibody.

Storage

Aliquot and store the SLC26A6 antibody at -20oC.