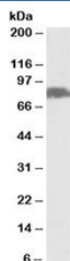


## SLC26A6 Antibody (R35574)

Catalog No.	Formulation	Size
R35574-100UG	0.5 mg/ml in 1X TBS, pH7.3, with 0.5% BSA (US sourced) and 0.02% sodium azide	100 ug

[Bulk quote request](#)

Availability	1-3 business days
Species Reactivity	Human, Mouse
Predicted Reactivity	Pig, Rat
Format	Antigen affinity purified
Host	Goat
Clonality	Polyclonal (goat origin)
Isotype	Goat Ig
Purity	Antigen affinity
Gene ID	65010
Applications	Western Blot : 0.1-0.3ug/ml ELISA (peptide) LOD : 1:64000
Limitations	This SLC26A6 antibody is available for research use only.



Western blot testing of human pancreas lysate with SLC26A6 antibody at 0.1ug/ml.  
Predicted molecular weight: ~80kDa.

### Description

Additional name(s) for this target protein: Solute carrier family 26, member 6

### Application Notes

Optimal dilution of the SLC26A6 antibody should be determined by the researcher.

1. This SLC26A6 antibody will detect isoform 1/2/3/4.

## Immunogen

Amino acids RDVAEYSEAKEVR were used as the immunogen for this SLC26A6 antibody.

## Storage

Aliquot and store the SLC26A6 antibody at -20oC.