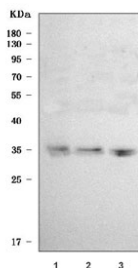


## SLC25A29 Antibody (RQ7703)

Catalog No.	Formulation	Size
RQ7703	0.5mg/ml if reconstituted with 0.2ml sterile DI water	100 ug

[Bulk quote request](#)

<b>Availability</b>	1-3 business days
<b>Species Reactivity</b>	Human
<b>Format</b>	Antigen affinity purified
<b>Host</b>	Rabbit
<b>Clonality</b>	Polyclonal (rabbit origin)
<b>Isotype</b>	Rabbit IgG
<b>Purity</b>	Antigen affinity purified
<b>Buffer</b>	Lyophilized from 1X PBS with 2% Trehalose
<b>UniProt</b>	Q8N8R3
<b>Applications</b>	Western Blot : 0.5-1ug/ml Direct ELISA : 0.1-0.5ug/ml
<b>Limitations</b>	This SLC25A29 antibody is available for research use only.



Western blot testing of human 1) SH-SY5Y, 2) MOLT4 and 3) HeLa cell lysate with SLC25A29 antibody. Predicted molecular weight ~32 kDa.

## Description

Solute carrier family 25, member 29 is a protein that in humans is encoded by the SLC25A29 gene. This gene encodes a nuclear-encoded mitochondrial protein that is a member of the large family of solute carrier family 25 (SLC25) mitochondrial transporters. The members of this superfamily are involved in numerous metabolic pathways and cell functions. This gene product was previously reported to be a mitochondrial carnitine-acylcarnitine-like (CACL) translocase (PMID:128829710) or an ornithine transporter (designated ORNT3, PMID:19287344), however, a recent study characterized the main role of this protein as a mitochondrial transporter of basic amino acids, with a preference for

arginine and lysine (PMID:24652292). Alternatively spliced transcript variants have been found for this gene.

## **Application Notes**

Optimal dilution of the SLC25A29 antibody should be determined by the researcher.

## **Immunogen**

E. coli-derived recombinant human protein (amino acids H20-E242) was used as the immunogen for the SLC25A29 antibody.

## **Storage**

After reconstitution, the SLC25A29 antibody can be stored for up to one month at 4°C. For long-term, aliquot and store at -20°C. Avoid repeated freezing and thawing.