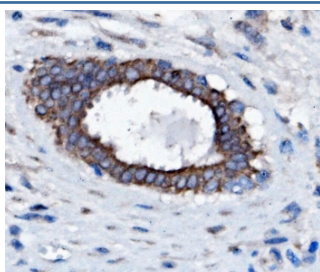


SLC25A1 Antibody (RQ5839)

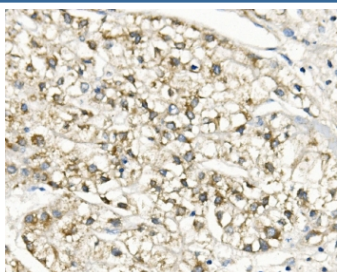
Catalog No.	Formulation	Size
RQ5839	0.5mg/ml if reconstituted with 0.2ml sterile DI water	100 ug

Bulk quote request

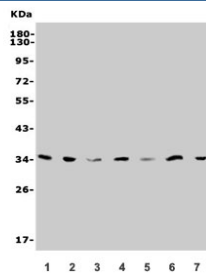
Availability	1-3 business days
Species Reactivity	Human, Mouse, Rat
Format	Antigen affinity purified
Host	Rabbit
Clonality	Polyclonal (rabbit origin)
Isotype	Rabbit IgG
Purity	Affinity purified
Buffer	Lyophilized from 1X PBS with 2% Trehalose and 0.025% sodium azide
UniProt	P53007
Localization	Cytoplasmic
Applications	Western Blot : 0.5-1ug/ml Immunohistochemistry : 1-2ug/ml
Limitations	This SLC25A1 antibody is available for research use only.



IHC staining of FFPE human breast cancer with SLC25A1 antibody. HIER: boil tissue sections in pH8 EDTA for 20 min and allow to cool before testing.



IHC staining of FFPE human liver cancer with SLC25A1 antibody. HIER: boil tissue sections in pH8 EDTA for 20 min and allow to cool before testing.



Western blot testing of human 1) HepG2, 2) Jurkat, 3) K562, 4) A549, 5) rat liver, 6) RH35 and 7) mouse HEPA1-6 lysate with SLC25A1 antibody. Predicted molecular weight ~34 kDa, commonly observed at 30-34 kDa.

Description

Tricarboxylate transport protein, mitochondrial, also known as tricarboxylate carrier protein and citrate transport protein (CTP), is a protein that in humans is encoded by the SLC25A1 gene. It is mapped to 22q11.21. This gene encodes a member of the mitochondrial carrier subfamily of solute carrier proteins. Members of this family include nuclear-encoded transporters that translocate small metabolites across the mitochondrial membrane. This protein regulates the movement of citrate across the inner membranes of the mitochondria. Mutations in this gene have been associated with combined D-2- and L-2-hydroxyglutaric aciduria. Pseudogenes of this gene have been identified on chromosomes 7, 11, 16, and 19. Alternative splicing results in multiple transcript variants.

Application Notes

Optimal dilution of the SLC25A1 antibody should be determined by the researcher.

Immunogen

Amino acids RMQGLEAHKYRNTWD from the human protein were used as the immunogen for the SLC25A1 antibody.

Storage

After reconstitution, the SLC25A1 antibody can be stored for up to one month at 4°C. For long-term, aliquot and store at -20°C. Avoid repeated freezing and thawing.