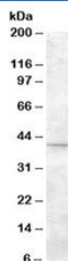


SLC24A5 Antibody (R36306)

Catalog No.	Formulation	Size
R36306-100UG	0.5 mg/ml in 1X TBS, pH7.3, with 0.5% BSA (US sourced) and 0.02% sodium azide	100 ug

[Bulk quote request](#)

Availability	1-3 business days
Species Reactivity	Human, Mouse, Rat
Predicted Reactivity	Dog
Format	Antigen affinity purified
Host	Goat
Clonality	Polyclonal (goat origin)
Isotype	Goat Ig
Purity	Antigen affinity
Gene ID	283652
Applications	Western Blot : 1-3ug/ml ELISA (peptide) LOD : 1:2000
Limitations	This SLC24A5 antibody is available for research use only.



Western blot testing of mouse eye lysate with SLC24A5 antibody at 2ug/ml. Predicted molecular weight: ~55kDa, routinely observed at ~43kDa. (1)

Description

Additional name(s) for this target protein: Solute carrier family 24, member 5

Application Notes

Optimal dilution of the SLC24A5 antibody should be determined by the researcher.

1. SLC24A5 may be observed as a triple at ~43kDa. The upper band is the glycosylated form and the lower band likely reflects signal peptide cleavage. (Ref 1)

Immunogen

Amino acids TTPDCRKKFWKN were used as the immunogen for this SLC24A5 antibody.

Storage

Aliquot and store the SLC24A5 antibody at -20oC.

References (1)