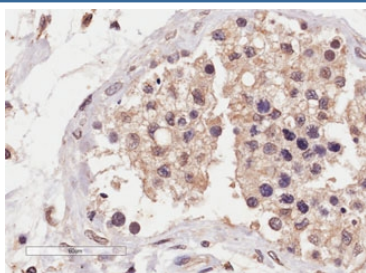


SLC22A16 Antibody (R36441)

Catalog No.	Formulation	Size
R36441-100UG	0.5 mg/ml in 1X TBS, pH7.3, with 0.5% BSA (US sourced) and 0.02% sodium azide	100 ug

[Bulk quote request](#)

Availability	1-3 business days
Species Reactivity	Human
Format	Antigen affinity purified
Clonality	Polyclonal (goat origin)
Isotype	Goat Ig
Purity	Antigen affinity
Gene ID	85413
Localization	Cytoplasmic, membranous
Applications	IHC (FFPE) : 4-8ug/ml
Limitations	This SLC22A16 antibody is available for research use only.



IHC testing of FFPE human testis tissue with SLC22A16 antibody at 4ug/ml. HIER: steamed with pH9 Tris/EDTA buffer, HRP-staining. Membranous staining of the seminiferous tubules is seen.

Description

Additional name(s) for this target protein: Solute carrier family 22 member 16; FLIPT2; fly-like putative organic ion transporter 2; OCT6; organic cation transporter 6

Application Notes

Optimal dilution of the SLC22A16 antibody should be determined by the researcher.

Immunogen

Amino acids CSRNKRENTSSL were used as the immunogen for this SLC22A16 antibody.

Storage

Aliquot and store the SLC22A16 antibody at -20oC.