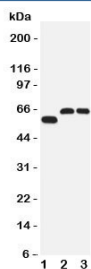


SLC1A4 Antibody (R31308)

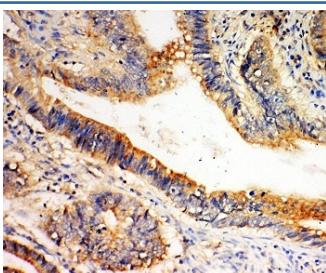
Catalog No.	Formulation	Size
R31308	0.5mg/ml if reconstituted with 0.2ml sterile DI water	100 ug

[Bulk quote request](#)

Availability	1-3 business days
Species Reactivity	Human, Mouse, Rat
Format	Antigen affinity purified
Host	Rabbit
Clonality	Polyclonal (rabbit origin)
Isotype	Rabbit IgG
Purity	Antigen affinity
Buffer	Lyophilized from 1X PBS with 2.5% BSA and 0.025% sodium azide/thimerosal
UniProt	P43007
Applications	Western Blot : 0.5-1ug/ml IHC (FFPE) : 0.5-1ug/ml
Limitations	This SLC1A4 antibody is available for research use only.



Western blot testing of SLC1A4 antibody and Lane 1: human U87; 2: rat brain; 3: mouse brain tissue lysate. Expected/observed size 60~80KD



IHC-P: SLC1A4 antibody testing of human intestine cancer tissue

Description

Neutral amino acid transporter A, also called ASCT1, is a protein that in humans is encoded by the SLC1A4 gene. SLC1A4 does not transport glutamate or aspartate but alanine, serine, cysteine, and threonine instead. It is found that the transporter functions primarily as an amino acid exchanger. Transport is associated with a chloride channel activity that is thermodynamically uncoupled from amino acid transport. This gene also exhibits sodium dependence.

Application Notes

The stated application concentrations are suggested starting amounts. Titration of the SLC1A4 antibody may be required due to differences in protocols and secondary/substrate sensitivity.

Immunogen

An amino acid sequence from the C-terminus of human SLC1A4 (EAIPNCKSEEETSPLVTH) was used as the immunogen for this SLC1A4 antibody.

Storage

After reconstitution, the SLC1A4 antibody can be stored for up to one month at 4°C. For long-term, aliquot and store at -20°C. Avoid repeated freezing and thawing.