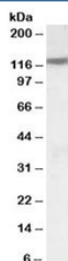


SLC12A6 Antibody (R36043)

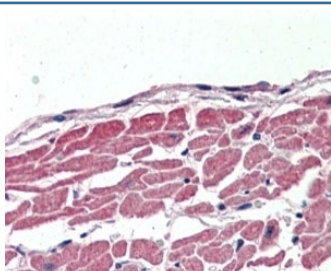
Catalog No.	Formulation	Size
R36043-100UG	0.5 mg/ml in 1X TBS, pH7.3, with 0.5% BSA (US sourced) and 0.02% sodium azide	100 ug

[Bulk quote request](#)

Availability	1-3 business days
Species Reactivity	Human
Format	Antigen affinity purified
Host	Goat
Clonality	Polyclonal (goat origin)
Isotype	Goat Ig
Purity	Antigen affinity
Gene ID	9990
Applications	Western Blot : 0.1-0.3ug/ml Immunohistochemistry (FFPE) : 2-4ug/ml ELISA (peptide) LOD : 1:16000
Limitations	This SLC12A6 antibody is available for research use only.



Western blot testing of human heart lysate with SLC12A6 antibody at 0.1ug/ml.
Predicted molecular weight: ~120~126kDa (isoforms 1-6).



IHC staining of FFPE human heart with SLC12A6 antibody at 2.5ug/ml. HIER: steamed with pH6 citrate buffer, AP-staining.

Description

Additional name(s) for this target protein: Solute carrier family 12 (potassium/chloride transporters), member 6; KCC3; potassium chloride cotransporter 3

Application Notes

Optimal dilution of the SLC12A6 antibody should be determined by the researcher.

Immunogen

Amino acids SRHIDVCSKTKE were used as the immunogen for this SLC12A6 antibody. This sequence is common to isoforms 1-6.

Storage

Aliquot and store the SLC12A6 antibody at -20oC.