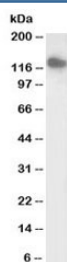


SLC12A6 Antibody Biotin Conjugate (R36043BTN)

Catalog No.	Formulation	Size
R36043BTN	0.5 mg/ml in 1X TBS, pH7.3, with 0.5% BSA (US sourced) and 0.02% sodium azide	100 ug

[Bulk quote request](#)

Availability	1-3 business days
Species Reactivity	Human
Format	Biotin Conjugate
Clonality	Polyclonal (goat origin)
Isotype	Goat Ig
Purity	Antigen affinity
Gene ID	9990
Applications	Western Blot : 0.1-0.3ug/ml Immunohistochemistry (FFPE) : suitable ELISA (peptide) LOD : 1:16000
Limitations	This SLC12A6 antibody is available for research use only.



Western blot testing of human heart lysate with biotinylated SLC12A6 antibody at 0.1ug/ml. Predicted molecular weight: ~120~126kDa (isoforms 1-6).

Description

Additional name(s) for this target protein: Solute carrier family 12 (potassium/chloride transporters), member 6; KCC3; potassium chloride cotransporter 3

Application Notes

Optimal dilution of the SLC12A6 antibody should be determined by the researcher.

Immunogen

Amino acids SRHIDVCSKTKE were used as the immunogen for this SLC12A6 antibody. This sequence is common to isoforms 1-6.

Storage

Aliquot and store the SLC12A6 antibody at -20oC.