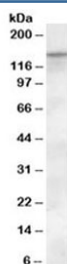


SLC12A4 Antibody (R33582)

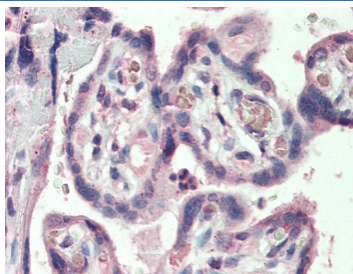
Catalog No.	Formulation	Size
R33582-100UG	0.5 mg/ml in 1X TBS, pH7.3, with 0.5% BSA (US sourced) and 0.02% sodium azide	100 ug

[Bulk quote request](#)

Availability	1-3 business days
Species Reactivity	Human
Predicted Reactivity	Mouse, Rat, Dog
Format	Antigen affinity purified
Host	Goat
Clonality	Polyclonal (goat origin)
Isotype	Goat Ig
Purity	Antigen affinity
Gene ID	6560
Localization	Cytoplasmic, membrane
Applications	Western Blot : 0.3-1ug/ml IHC (FFPE) : 5ug/ml ELISA (peptide) LOD : 1:4000
Limitations	This SLC12A4 antibody is available for research use only.



Western blot testing of human heart lysate with SLC12A4 antibody at 0.3ug/ml.
Predicted molecular weight: ~121 kDa, observed here at ~150 kDa.



IHC testing of FFPE human placental tissue with SLC12A4 antibody at 5ug/ml. Steamed antigen retrieval with citrate buffer pH 6, AP-staining.

Description

Additional name(s) for this target protein: Solute carrier family 12 (potassium/chloride transporters), member 4; KCC1

Application Notes

Optimal dilution of the SLC12A4 antibody should be determined by the researcher.

Immunogen

Amino acids DPSHAPDNFRE were used as the immunogen for this SLC12A4 antibody.

Storage

Aliquot and store the SLC12A4 antibody at -20oC.