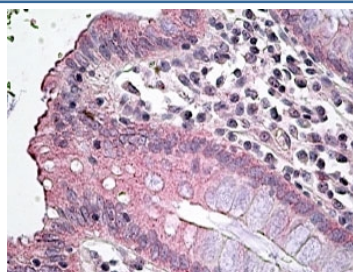


## SLC12A2 Antibody (R34763)

Catalog No.	Formulation	Size
R34763-100UG	0.5 mg/ml in 1X TBS, pH7.3, with 0.5% BSA (US sourced) and 0.02% sodium azide	100 ug

### Bulk quote request

Availability	1-3 business days
Species Reactivity	Human
Predicted Reactivity	Cow, Dog, Mouse, Rat
Format	Antigen affinity purified
Host	Goat
Clonality	Polyclonal (goat origin)
Isotype	Goat Ig
Purity	Antigen affinity
Gene ID	6558
Applications	Immunohistochemistry (FFPE) : 4-6ug/ml ELISA (peptide) LOD : 1:64000
Limitations	This SLC12A2 antibody is available for research use only.



IHC testing of FFPE human colon with SLC12A2 antibody at 4ug/ml. HIER: steamed with pH6 citrate buffer, AP-staining.

### Description

Additional name(s) for this target protein: Solute carrier family 12 (sodium/potassium/chloride transporters), member 2

### Application Notes

Optimal dilution of the SLC12A2 antibody should be determined by the researcher.

## **Immunogen**

Amino acids NALQHSIRLSGVEDH were used as the immunogen for this SLC12A2 antibody.

## **Storage**

Aliquot and store the SLC12A2 antibody at -20oC.