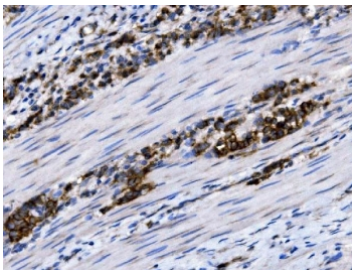


SLC12A2 Antibody / NKCC1 (RQ6704)

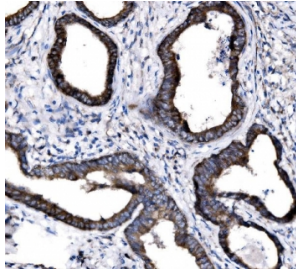
Catalog No.	Formulation	Size
RQ6704	0.5mg/ml if reconstituted with 0.2ml sterile DI water	100 ug

[Bulk quote request](#)

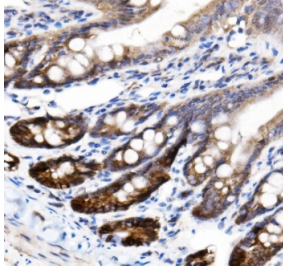
Availability	1-3 business days
Species Reactivity	Human, Rat
Format	Antigen affinity purified
Host	Rabbit
Clonality	Polyclonal (rabbit origin)
Isotype	Rabbit IgG
Purity	Antigen affinity purified
Buffer	Lyophilized from 1X PBS with 2% Trehalose
UniProt	P55011
Applications	Western Blot : 1-2ug/ml Immunohistochemistry (FFPE) : 2-5ug/ml Flow Cytometry : 1-3ug/million cells Direct ELISA : 0.1-0.5ug/ml
Limitations	This SLC12A2 antibody is available for research use only.



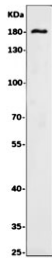
IHC staining of FFPE human rectal cancer tissue with SLC12A2 antibody. HIER: boil tissue sections in pH8 EDTA for 20 min and allow to cool before testing.



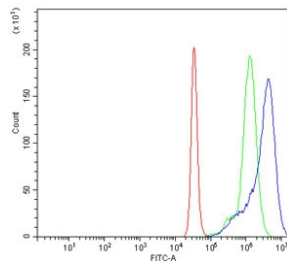
IHC staining of FFPE human colon cancer tissue with SLC12A2 antibody. HIER: boil tissue sections in pH8 EDTA for 20 min and allow to cool before testing.



IHC staining of FFPE rat intestine tissue with SLC12A2 antibody. HIER: boil tissue sections in pH8 EDTA for 20 min and allow to cool before testing.



Western blot testing of human Caco-2 cell lysate with SLC12A2 antibody. Expected molecular weight: 130-180 kDa depending on glycosylation level.



Flow cytometry testing of human K562 cells with SLC12A2 antibody at 1ug/million cells (blocked with goat sera); Red=cells alone, Green=isotype control, Blue= SLC12A2 antibody.

Description

Solute carrier family 12 (sodium/potassium/chloride transporters), member 2, also known as NKCC1, is widely distributed throughout the body, especially in organs that secrete fluids, called exocrine glands. By fluorescence in situ hybridization, this gene is mapped to chromosome 5q23.3. The protein encoded by this gene mediates sodium and chloride transport and reabsorption. The encoded protein is a membrane protein and is important in maintaining proper ionic balance and cell volume. This protein is phosphorylated in response to DNA damage. Three transcript variants encoding two different isoforms have been found for this gene.

Application Notes

Optimal dilution of the SLC12A2 antibody should be determined by the researcher.

Immunogen

Recombinant human protein (amino acids K889-K943) was used as the immunogen for the SLC12A2 antibody.

Storage

After reconstitution, the SLC12A2 antibody can be stored for up to one month at 4°C. For long-term, aliquot and store at

-20oC. Avoid repeated freezing and thawing.