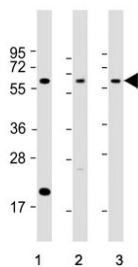


SLC11A2 Antibody / Solute carrier family 11 member 2 (F55091)

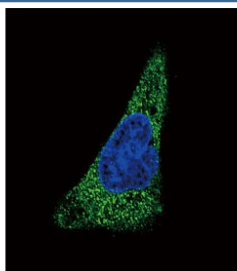
Catalog No.	Formulation	Size
F55091-0.4ML	In 1X PBS, pH 7.4, with 0.09% sodium azide	0.4 ml
F55091-0.08ML	In 1X PBS, pH 7.4, with 0.09% sodium azide	0.08 ml

[Bulk quote request](#)

Availability	1-3 business days
Species Reactivity	Human, Mouse, Rat
Format	Purified
Clonality	Polyclonal (rabbit origin)
Isotype	Rabbit Ig
Purity	Antigen affinity purified
UniProt	P49281
Localization	Cytoplasm
Applications	Western Blot : 1:1000-1:2000 Immunofluorescence : 1:10-1:50
Limitations	This SLC11A2 antibody is available for research use only.



Western blot testing of 1) human PANC-1, 2) mouse cerebellum and 3) rat cerebellum tissue lysate with SLC11A2 antibody. Predicted molecular weight ~63 kDa.



Immunofluorescent staining of fixed and permeabilized human HepG2 cells with SLC11A2 antibody (green) and DAPI nuclear stain (blue).

Description

SLC11A2, also known as Solute carrier family 11 member 2 and Divalent metal ion transporter 1 (DMT1), SLC11A2 is responsible for transporting essential metal ions, such as iron and manganese, across cell membranes. These metal ions are vital for various biological processes, including oxygen transport, energy production, and DNA synthesis. Research has shown that mutations in the SLC11A2 gene can lead to various health conditions, such as iron-deficiency anemia and neurodegenerative disorders.

Application Notes

The stated application concentrations are suggested starting points. Titration of the SLC11A2 antibody may be required due to differences in protocols and secondary/substrate sensitivity.

Immunogen

A portion of amino acids 262-291 from the human protein was used as the immunogen for the SLC11A2 antibody.

Storage

Aliquot the SLC11A2 antibody and store frozen at -20oC or colder. Avoid repeated freeze-thaw cycles.