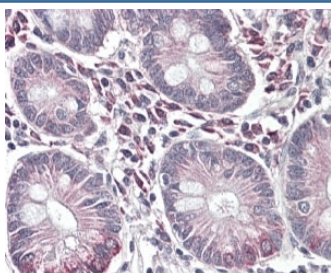


SLC10A2 Antibody (R36375)

Catalog No.	Formulation	Size
R36375-100UG	0.5 mg/ml in 1X TBS, pH7.3, with 0.5% BSA (US sourced) and 0.02% sodium azide	100 ug

Bulk quote request

Availability	1-3 business days
Species Reactivity	Human
Format	Antigen affinity purified
Clonality	Polyclonal (goat origin)
Isotype	Goat Ig
Purity	Antigen affinity
Gene ID	6555
Applications	Immunohistochemistry (FFPE) : 3-6ug/ml ELISA (peptide) LOD : 1:16000
Limitations	This SLC10A2 antibody is available for research use only.



IHC testing of FFPE human small intestine with SLC10A2 antibody at 4ug/ml. HIER: steamed with pH6 citrate buffer, AP-staining. Staining of cells in the lamina propria between the intestinal villi is seen.

Description

Additional name(s) for this target protein: Solute carrier family 10 (sodium/bile acid cotransporter family), member 2; ASBT

Application Notes

Optimal dilution of the SLC10A2 antibody should be determined by the researcher.

Immunogen

Amino acids YKANGGFQPDEK were used as the immunogen for this SLC10A2 antibody.

Storage

Aliquot and store the SLC10A2 antibody at -20oC.