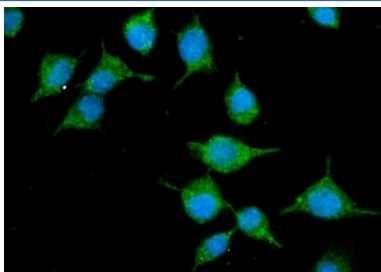


Slc10a1 Antibody / Ntcp (RQ6338)

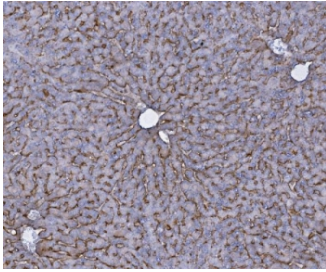
Catalog No.	Formulation	Size
RQ6338	0.5mg/ml if reconstituted with 0.2ml sterile DI water	100 ug

Bulk quote request

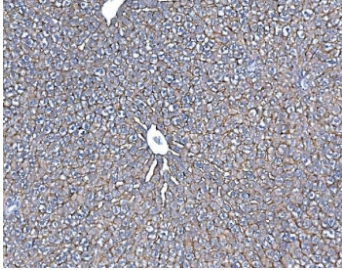
Availability	1-3 business days
Species Reactivity	Mouse, Rat
Format	Purified
Host	Rabbit
Clonality	Polyclonal (rabbit origin)
Isotype	Rabbit IgG
Purity	Antigen affinity purified
Buffer	Lyophilized from 1X PBS with 2% Trehalose
UniProt	O08705
Applications	Western Blot : 0.5-1ug/ml Immunohistochemistry (FFPE) : 2-5ug/ml Immunofluorescence (FFPE) : 2-4ug/ml Flow Cytometry : 1-3ug/million cells Direct ELISA
Limitations	This Slc10a1 antibody is available for research use only.



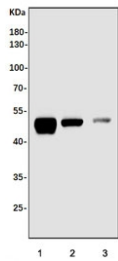
Immunofluorescent staining of FFPE mouse HEPA1-6 cells with Slc10a1 antibody (green) and DAPI nuclear stain (blue). HIER: steam section in pH6 citrate buffer for 20 min.



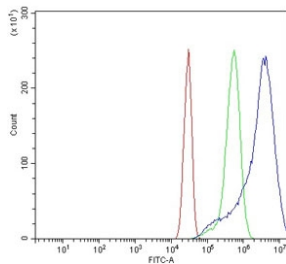
IHC staining of FFPE mouse liver with Slc10a1 antibody. HIER: boil tissue sections in pH8 EDTA for 20 min and allow to cool before testing.



IHC staining of FFPE rat liver with Slc10a1 antibody. HIER: boil tissue sections in pH8 EDTA for 20 min and allow to cool before testing.



Western blot testing of 1) rat liver, 2) mouse liver and 3) mouse HEPA1-6 cell lysate with Slc10a1 antibody. Expected molecular weight: 38-45 kDa.



Flow cytometry testing of mouse HEPA1-6 cells with Slc10a1 antibody at 1ug/million cells (blocked with goat sera); Red=cells alone, Green=isotype control, Blue= Slc10a1 antibody.

Description

Sodium/bile acid cotransporter also known as the Na⁺-taurocholate cotransporting polypeptide (NTCP) or liver bile acid transporter (LBAT) is a protein that in humans is encoded by the SLC10A1 (solute carrier family 10 member 1) gene. It is mapped to 12 C3-D1; 12 37.21 cM. The protein encoded by this gene belongs to the sodium/bile acid cotransporter family, which are integral membrane glycoproteins that participate in the enterohepatic circulation of bile acids. Two homologous transporters are involved in the reabsorption of bile acids; the ileal sodium/bile acid cotransporter with an apical cell localization that absorbs bile acids from the intestinal lumen, bile duct and kidney, and the liver-specific sodium/bile acid cotransporter, represented by this protein, that is found in the basolateral membranes of hepatocytes. Bile acids are the catabolic product of cholesterol metabolism, hence this protein is important for cholesterol homeostasis.

Application Notes

Optimal dilution of the Slc10a1 antibody should be determined by the researcher.

Immunogen

Recombinant mouse protein (amino acids F300-N342) was used as the immunogen for the Slc10a1 antibody.

Storage

After reconstitution, the Slc10a1 antibody can be stored for up to one month at 4°C. For long-term, aliquot and store at -20°C. Avoid repeated freezing and thawing.