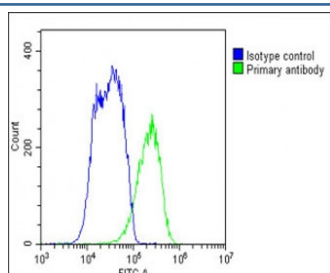


SLC10A1 Antibody / NTCP (F55060)

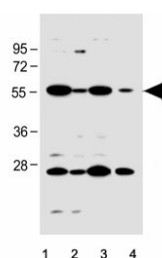
Catalog No.	Formulation	Size
F55060-0.2ML	In 1X PBS, pH 7.4, with 0.09% sodium azide	0.2 ml
F55060-0.05ML	In 1X PBS, pH 7.4, with 0.09% sodium azide	0.05 ml

[Bulk quote request](#)

Availability	1-3 business days
Species Reactivity	Human
Format	Antigen affinity purified
Clonality	Polyclonal (rabbit origin)
Isotype	Rabbit Ig
Purity	Antigen affinity
UniProt	Q14973
Applications	Western Blot : 1:500-1:1000 Flow Cytometry : 1:10-1:25 per million cells in 0.1ml
Limitations	This SLC10A1 antibody is available for research use only.



Flow cytometry testing of fixed human HepG2 cells with SLC10A1 antibody;
Blue=isotype control, Green= SLC10A1 antibody.



Western blot testing of human 1) HT-1080, 2) HepG2, 3) K562 and 4) Caco-2 cell lysate with SLC10A1 antibody. Expected molecular weight: 38~45 kDa.

Description

The SLC10A1 protein, also known as Sodium/bile acid cotransporter and NTCP, plays a role in the transport of bile acids across the cell membrane. Bile acids are essential for the digestion and absorption of fats and fat-soluble vitamins in the small intestine. Without the proper functioning of the SLC10A1 protein, the absorption of these crucial nutrients can be impaired, leading to various health problems. Research has shown that the SLC10A1 protein is not only involved in bile acid transport but also plays a role in drug metabolism and the regulation of cholesterol levels in the body.

Application Notes

Titration of the SLC10A1 antibody may be required due to differences in protocols and secondary/substrate sensitivity.

Immunogen

A portion of amino acids 316-343 from the human protein was used as the immunogen for this SLC10A1 antibody.

Storage

Aliquot the SLC10A1 antibody and store frozen at -20oC or colder. Avoid repeated freeze-thaw cycles.