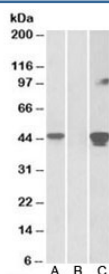


## SLAMF8 Antibody (R36221)

Catalog No.	Formulation	Size
R36221-100UG	0.5 mg/ml in 1X TBS, pH7.3, with 0.5% BSA (US sourced) and 0.02% sodium azide	100 ug

[Bulk quote request](#)

Availability	1-3 business days
Species Reactivity	Human
Predicted Reactivity	Cow, Mouse, Rat
Format	Antigen affinity purified
Host	Goat
Clonality	Polyclonal (goat origin)
Isotype	Goat Ig
Purity	Antigen affinity
Gene ID	56833
Applications	Western Blot : 1-3ug/ml ELISA (peptide) LOD : 1:8000
Limitations	This SLAMF8 antibody is available for research use only.



Western blot of HEK293 lysate overexpressing human SLAMF8-MYC probed with SLAMF8 antibody [1ug/ml] in (A) and anti-MYC [1/1000] in (C). Mock-transfected HEK293 probed with SLAMF8 antibody [1ug/ml] in (B). Predicted molecular weight: ~32/45kDa (unmodified/glycosylated).

## Description

Additional name(s) for this target protein: SLAM family member 8; B lymphocyte activator macrophage expressed (BLAME); CD353

## Application Notes

Optimal dilution of the SLAMF8 antibody should be determined by the researcher.

## **Immunogen**

Amino acids TLYHSRFLGRAQ were used as the immunogen for this SLAMF8 antibody.

## **Storage**

Aliquot and store the SLAMF8 antibody at -20oC.