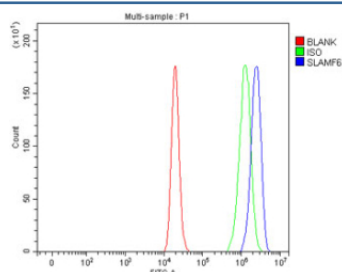


SLAMF6 Antibody / CD352 (RQ8840)

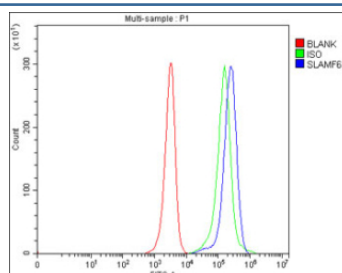
Catalog No.	Formulation	Size
RQ8840	0.5mg/ml if reconstituted with 0.2ml sterile DI water	100 ug

Bulk quote request

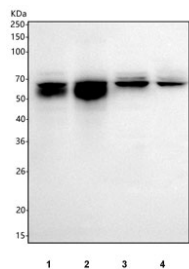
Availability	1-3 days
Species Reactivity	Human
Format	Antigen affinity purified
Host	Rabbit
Clonality	Polyclonal (rabbit origin)
Isotype	Rabbit IgG
Purity	Antigen affinity chromatography
Buffer	Lyophilized from 1X PBS with 2% Trehalose
UniProt	Q96DU3
Applications	Western Blot : 1-2ug/ml Flow Cytometry : 1-3ug/million cells ELISA : 0.1-0.5ug/ml
Limitations	This SLAMF6 antibody is available for research use only.



Flow cytometry testing of fixed human ThP-1 cells with SLAMF6 antibody at 1ug/million cells (blocked with goat sera); Red=cells alone, Green=isotype control, Blue= SLAMF6 antibody.



Flow cytometry testing of fixed human JK cells with SLAMF6 antibody at 1ug/million cells (blocked with goat sera); Red=cells alone, Green=isotype control, Blue= SLAMF6 antibody.



Western blot testing of human 1) Daudi, 2) Ramos, 3) Jurkat and 4) MOLT4 cell lysate with SLAMF6 antibody. Predicted molecular weight ~37 kDa but may be observed at higher molecular weights due to glycosylation.

Description

SLAM family member 6 is a protein that in humans is encoded by the SLAMF6 gene. The protein encoded by this gene is a type I transmembrane protein, belonging to the CD2 subfamily of the immunoglobulin superfamily. This encoded protein is expressed on Natural killer (NK), T, and B lymphocytes. It undergoes tyrosine phosphorylation and associates with the Src homology 2 domain-containing protein (SH2D1A) as well as with SH2 domain-containing phosphatases (SHPs). It functions as a coreceptor in the process of NK cell activation. It can also mediate inhibitory signals in NK cells from X-linked lymphoproliferative patients. Alternative splicing results in multiple transcript variants encoding distinct isoforms.

Application Notes

Optimal dilution of the SLAMF6 antibody should be determined by the researcher.

Immunogen

An E.coli-derived human recombinant protein (amino acids Q22-V332) was used as the immunogen for the SLAMF6 antibody.

Storage

After reconstitution, the SLAMF6 antibody can be stored for up to one month at 4°C. For long-term, aliquot and store at -20°C. Avoid repeated freezing and thawing.