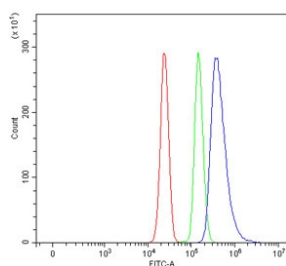


SLAMF1 Antibody / SMAM / CD150 (RQ6903)

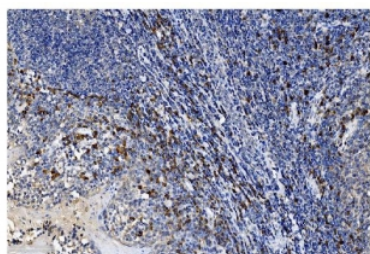
Catalog No.	Formulation	Size
RQ6903	0.5mg/ml if reconstituted with 0.2ml sterile DI water	100 ug

Bulk quote request

Availability	1-3 business days
Species Reactivity	Human
Format	Antigen affinity purified
Host	Rabbit
Clonality	Polyclonal (rabbit origin)
Isotype	Rabbit IgG
Purity	Antigen affinity purified
Buffer	Lyophilized from 1X PBS with 2% Trehalose
UniProt	Q13291
Applications	Immunohistochemistry (FFPE) : 2-5ug/ml Flow Cytometry : 1-3ug/million cells Direct ELISA : 0.1-0.5ug/ml
Limitations	This SLAMF1 antibody is available for research use only.



Flow cytometry testing of human U937 cells with SLAMF1 antibody at 1ug/million cells (blocked with goat sera); Red=cells alone, Green=isotype control, Blue= SLAMF1 antibody.



IHC staining of FFPE human tonsil tissue with SLAMF1 antibody. HIER: boil tissue sections in pH8 EDTA for 20 min and allow to cool before testing.

Description

Signaling lymphocytic activation molecule 1 is a protein that in humans is encoded by the SLAMF1 gene. SLAMF1 Antibody: The signaling lymphocyte-activation molecule family member 1 (SLAMF1) is a novel receptor on T cells that potentiates T cell expansion in a CD28-independent manner. SLAMF1 is predominantly expressed by hematopoietic tissues. Reports suggest that the extracellular domain of SLAMF1 is the receptor for the measles virus and acts as a co-activator on both T and B cells. It is thought to interact with SH2D1A and with PTPN11 via its cytoplasmic domain. Mutations of the SLAM associated gene may be associated with X-linked lympho-proliferative disease (XLP).

Application Notes

Optimal dilution of the SLAMF1 antibody should be determined by the researcher.

Immunogen

Recombinant human protein (amino acids K34-N213) was used as the immunogen for the SLAMF1 antibody.

Storage

After reconstitution, the SLAMF1 antibody can be stored for up to one month at 4°C. For long-term, aliquot and store at -20°C. Avoid repeated freezing and thawing.