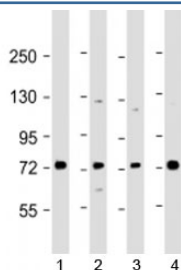


SKI Antibody (F53823)

Catalog No.	Formulation	Size
F53823-0.2ML	In 1X PBS, pH 7.4, with 0.09% sodium azide	0.2 ml
F53823-0.05ML	In 1X PBS, pH 7.4, with 0.09% sodium azide	0.05 ml

[Bulk quote request](#)

Availability	1-3 business days
Species Reactivity	Human
Predicted Reactivity	Horse
Format	Antigen affinity purified
Host	Rabbit
Clonality	Polyclonal (rabbit origin)
Isotype	Rabbit Ig
Purity	Antigen affinity
UniProt	P12755
Applications	Western Blot : 1:1000-2000
Limitations	This SKI antibody is available for research use only.



Western blot testing of human 1) Raji, 2) A549, 3) HL-60 and 4) K562 cell lysate with SKI antibody at 1:2000. Predicted molecular weight: 80 kDa.

Description

Ski oncogene may play a role in terminal differentiation of skeletal muscle cells but not in the determination of cells to the myogenic lineage. Functions as a repressor of TGF-beta signaling.

Application Notes

Titration of the SKI antibody may be required due to differences in protocols and secondary/substrate sensitivity.

Immunogen

A portion of amino acids 21-54 from the human protein was used as the immunogen for the SKI antibody.

Storage

Aliquot the SKI antibody and store frozen at -20oC or colder. Avoid repeated freeze-thaw cycles.