

Skeletal Muscle Actin Antibody [clone 337CT30.10.1] (F40313)

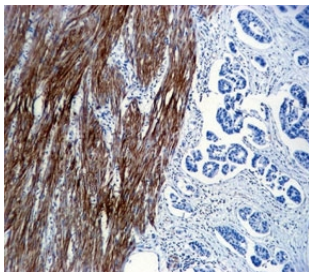
Catalog No.	Formulation	Size
F40313-0.4ML	In 1X PBS, pH 7.4, with 0.09% sodium azide	0.4 ml
F40313-0.08ML	In 1X PBS, pH 7.4, with 0.09% sodium azide	0.08

[Bulk quote request](#)

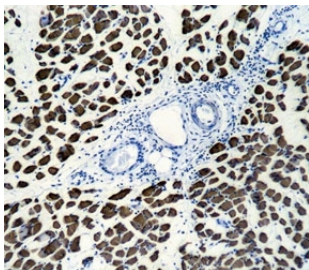
Availability	1-3 business days
Species Reactivity	Human
Predicted Reactivity	Bovine, Chicken, Mouse, Pig, Rabbit, Rat
Format	Purified
Clonality	Monoclonal (mouse origin)
Isotype	Mouse IgG1, k
Clone Name	337CT30.10.1
Purity	Purified
UniProt	P68133
Applications	Western Blot : 1:100-1:500 IHC (Paraffin) : 1:10-1:50 Flow Cytometry : 1:10-1:50
Limitations	This skeletal muscle Actin antibody is available for research use only.

72
55
36
28
17

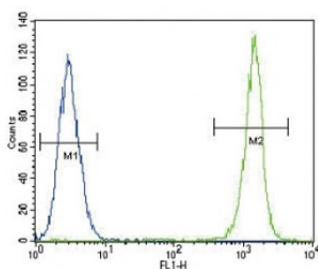
Skeletal muscle Actin antibody western blot analysis in CEM lysate.



Skeletal muscle Actin antibody immunohistochemistry analysis in formalin fixed and paraffin embedded human colon carcinoma.



Skeletal muscle Actin antibody immunohistochemistry analysis in formalin fixed and paraffin embedded human skeletal muscle.



Skeletal muscle Actin antibody flow cytometric analysis of A549 cells (green) compared to a [negative control](#) (blue). FITC-conjugated goat-anti-rabbit secondary Ab was used for the analysis.

Description

The product encoded by this gene belongs to the actin family of proteins, which are highly conserved proteins that play a role in cell motility, structure and integrity. Alpha, beta and gamma actin isoforms have been identified, with α -actins being a major constituent of the contractile apparatus, while beta and gamma actins are involved in the regulation of cell motility. This actin is an α -actin that is found in skeletal muscle. Mutations in this gene cause nemaline myopathy type 3, congenital myopathy with excess of thin myofilaments, congenital myopathy with cores, and congenital myopathy with fiber-type disproportion, diseases that lead to muscle fiber defects.

Application Notes

Titration of the skeletal muscle Actin antibody may be required due to differences in protocols and secondary/substrate sensitivity.

Immunogen

This skeletal muscle Actin antibody was produced from a mouse immunized with ACTA1 recombinant protein.

Storage

Aliquot the skeletal muscle Actin antibody and store frozen at -20°C or colder. Avoid repeated freeze-thaw cycles.

