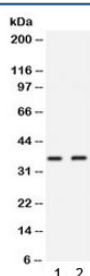


## SIX1 Antibody (R32236)

Catalog No.	Formulation	Size
R32236	0.5mg/ml if reconstituted with 0.2ml sterile DI water	100 ug

**Bulk quote request**

<b>Availability</b>	1-3 business days
<b>Species Reactivity</b>	Human
<b>Format</b>	Antigen affinity purified
<b>Clonality</b>	Polyclonal (rabbit origin)
<b>Isotype</b>	Rabbit IgG
<b>Purity</b>	Antigen affinity
<b>Buffer</b>	Lyophilized from 1X PBS with 2.5% BSA and 0.025% sodium azide
<b>UniProt</b>	Q15475
<b>Applications</b>	Western Blot : 0.1-0.5ug/ml
<b>Limitations</b>	This SIX1 antibody is available for research use only.



Western blot testing of 1) MCF7 and 2) 22RV1 lysate with SIX1 antibody. Predicted molecular weight ~32 kDa.

## Description

Homeobox protein SIX1 (Sineoculis homeobox homolog 1) is a protein that in humans is encoded by the SIX1 gene. It is mapped to 14q23.1. The protein encoded by this gene is a homeobox protein that is similar to the *Drosophila* 'sine oculis' gene product. This gene is found in a cluster of related genes on chromosome 14 and is thought to be involved in limb development. Defects in this gene are a cause of autosomal dominant deafness type 23 (DFNA23) and branchiootic syndrome type 3 (BOS3).

## Application Notes

Optimal dilution of the SIX1 antibody should be determined by the researcher.

## Immunogen

Amino acids NYSLPGLTASQPSHGLQTHQHQLQDSLLGPLTSSLVDL of human SIX1 were used as the immunogen for the SIX1 antibody.

## Storage

After reconstitution, the SIX1 antibody can be stored for up to one month at 4°C. For long-term, aliquot and store at -20°C. Avoid repeated freezing and thawing.