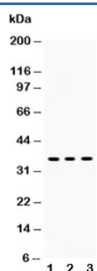


SIRT6 Antibody (R31770)

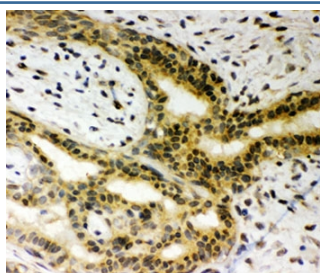
Catalog No.	Formulation	Size
R31770	0.5mg/ml if reconstituted with 0.2ml sterile DI water	100 ug

Bulk quote request

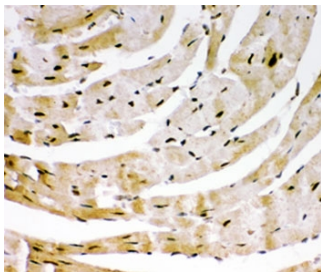
Availability	1-3 business days
Species Reactivity	Human, Mouse
Format	Antigen affinity purified
Host	Rabbit
Clonality	Polyclonal (rabbit origin)
Isotype	Rabbit IgG
Purity	Antigen affinity
Buffer	Lyophilized from 1X PBS with 2.5% BSA and 0.025% sodium azide
Gene ID	51548
Applications	Western Blot : 0.5-1ug/ml IHC (FFPE) : 0.5-1ug/ml
Limitations	This SIRT6 antibody is available for research use only.



Western blot testing of SIRT6 antibody and Lane 1: HeLa; 2: A549; 3: human placenta lysate



IHC-P: SIRT6 antibody testing of human breast cancer tissue



IHC-P: SIRT6 antibody testing of mouse heart tissue

Description

Sirtuin 6, also known as SIR2L6, is a member of the sirtuin family of proteins, homologs to the yeast Sir2 protein. Members of the sirtuin family are characterized by a sirtuin core domain and grouped into four classes. The functions of human sirtuins have not yet been determined; however, yeast sirtuin proteins are known to regulate epigenetic gene silencing and suppress recombination of rDNA. Studies suggest that the human sirtuins may function as intracellular regulatory proteins with mono-ADP-ribosyltransferase activity. SIRT6 is included in class IV of the sirtuin family. Alternative splicing results in multiple transcript variants.

Application Notes

The stated application concentrations are suggested starting points. Titration of the SIRT6 antibody may be required due to differences in protocols and secondary/substrate sensitivity.

Immunogen

Human partial recombinant protein (AA 14-180) was used as the immunogen for this SIRT6 antibody.

Storage

After reconstitution, the SIRT6 antibody can be stored for up to one month at 4°C. For long-term, aliquot and store at -20°C. Avoid repeated freezing and thawing.