

SIRT6 Antibody (F49522)

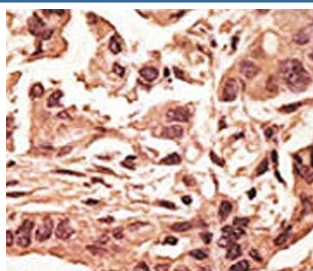
Catalog No.	Formulation	Size
F49522-0.4ML	In 1X PBS, pH 7.4, with 0.09% sodium azide	0.4 ml
F49522-0.08ML	In 1X PBS, pH 7.4, with 0.09% sodium azide	0.08 ml

[Bulk quote request](#)

Availability	1-3 business days
Species Reactivity	Human, Mouse
Format	Purified
Clonality	Polyclonal (rabbit origin)
Isotype	Rabbit Ig
Purity	Purified
UniProt	Q8N6T7
Applications	IHC (Paraffin) : 1:50-1:100 Western Blot : 1:1000
Limitations	This SIRT6 antibody is available for research use only.

95
72
55
36
28
17

Western blot analysis of SIRT6 antibody and mouse stomach tissue lysate



IHC analysis of FFPE human breast carcinoma tissue stained with the SIRT6 antibody

Description

SIRT6 is a member of the sirtuin family of proteins, homologs to the yeast Sir2 protein. Members of the sirtuin family are characterized by a sirtuin core domain and grouped into four classes. The functions of human sirtuins have not yet been determined; however, yeast sirtuin proteins are known to regulate epigenetic gene silencing and suppress recombination of rDNA. Studies suggest that the human sirtuins may function as intracellular regulatory proteins with mono-ADP-ribosyltransferase activity.

Application Notes

Titration of the SIRT6 antibody may be required due to differences in protocols and secondary/substrate sensitivity.

Immunogen

A portion of amino acids 290-319 from the human protein was used as the immunogen for this SIRT6 antibody.

Storage

Aliquot the SIRT6 antibody and store frozen at -20oC or colder. Avoid repeated freeze-thaw cycles.