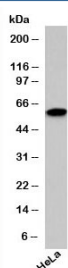


## SIN1 Antibody / SAPK interacting protein 1 / MAPKAP1 (N1067)

Catalog No.	Formulation	Size
N1067-100UG	0.5 mg/ml in 1X PBS with 0.1 mg/ml BSA (US sourced), 0.05% sodium azide	100 ug
N1067-25UG	0.5 mg/ml in 1X PBS with 0.1 mg/ml BSA (US sourced), 0.05% sodium azide	25 ug

[Bulk quote request](#)

<b>Species Reactivity</b>	Human, Mouse, Rat, Dog
<b>Format</b>	Purified
<b>Clonality</b>	Polyclonal (rabbit origin)
<b>Isotype</b>	Rabbit IgG
<b>Purity</b>	Protein A purified antibody
<b>Buffer</b>	1X PBS, pH 7.4
<b>Gene ID</b>	79109
<b>Applications</b>	Western Blot : 1-3ug/ml
<b>Limitations</b>	This <b>SIN1 antibody</b> is available for research use only.



Western blot testing of human samples with SIN1 antibody at 1ug/ml.

### Description

mTOR, or Mammalian target of rapamycin, a large protein kinase, is a regulator of cell growth and survival via its mTORC1 (mTOR + GBL + Raptor) and mTORC2 (mTOR + GBL + SIN1 + Rictor) complexes. SIN1 is an essential component of mTORC2, which activates Akt by phosphorylating Ser473. Phosphorylation of SIN1 at Thr86/398 causes its dissociation from the mTORC2 complex, inhibiting mTORC2s kinase activity.

### Application Notes

Provided assay concentrations are suggestions only, SIN1 antibody titration may be required for optimal results.

## Immunogen

A recombinant protein fragment from the C-terminal region of human SIN1 was used as the immunogen for this antibody.

## Storage

Aliquot and store frozen at -20oC or colder to avoid repeated freeze-thaw cycles.

## Alternate Names

MAPKAP1, SAPK interacting protein 1, MIP1