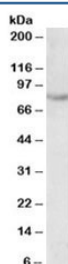


SIM2 Antibody / Single-minded homolog 2 (R35856)

Catalog No.	Formulation	Size
R35856-100UG	0.5 mg/ml in 1X TBS, pH7.3, with 0.5% BSA (US sourced) and 0.02% sodium azide	100 ug

[Bulk quote request](#)

Availability	1-3 business days
Species Reactivity	Human, Mouse
Predicted Reactivity	Rat
Format	Antigen affinity purified
Clonality	Polyclonal (goat origin)
Isotype	Goat Ig
Purity	Antigen affinity
Gene ID	6493
Applications	Western Blot : 0.5-1.5ug/ml ELISA (peptide) LOD : 1:1000
Limitations	This SIM2 antibody is available for research use only.



Western blot testing of fetal mouse kidney lysate with SIM2 antibody at 0.5ug/ml.
Predicted molecular weight: 73kDa.

Description

Additional name(s) for this target protein: Single-minded homolog 2; Class E basic helix-loop-helix protein 15; BHLHE15

Application Notes

Optimal dilution of the SIM2 antibody should be determined by the researcher.

Immunogen

Amino acids SDLLYTPSYS were used as the immunogen for this SIM2 antibody.

Storage

Aliquot and store the SIM2 antibody at -20oC.