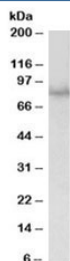


SIM1 Antibody (R35899)

Catalog No.	Formulation	Size
R35899-100UG	0.5 mg/ml in 1X TBS, pH7.3, with 0.5% BSA (US sourced) and 0.02% sodium azide	100 ug

[Bulk quote request](#)

Availability	1-3 business days
Species Reactivity	Human
Predicted Reactivity	Cow, Dog, Mouse, Pig, Rat
Format	Antigen affinity purified
Host	Goat
Clonality	Polyclonal (goat origin)
Isotype	Goat Ig
Purity	Antigen affinity
Gene ID	6492
Applications	Western Blot : 1-3ug/ml ELISA (peptide) LOD : 1:2000
Limitations	This SIM1 antibody is available for research use only.



Western blot testing of HEK293 lysate with SIM1 antibody at 1ug/ml. Predicted molecular weight: 85kDa.

Description

Additional name(s) for this target protein: Single-minded homolog 1

Application Notes

Optimal dilution of the SIM1 antibody should be determined by the researcher.

Immunogen

Amino acids SGDRYRTEQYQS were used as the immunogen for this SIM1 antibody.

Storage

Aliquot and store the SIM1 antibody at -20oC.