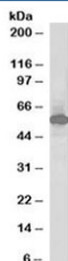


## SIL1 Antibody / Nucleotide exchange factor SIL1 (R33867)

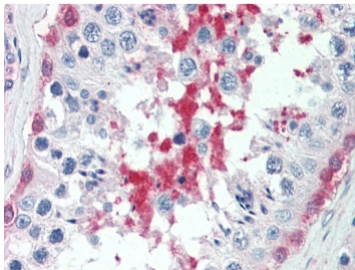
Catalog No.	Formulation	Size
R33867-100UG	0.5 mg/ml in 1X TBS, pH7.3, with 0.5% BSA (US sourced) and 0.02% sodium azide	100 ug

[Bulk quote request](#)

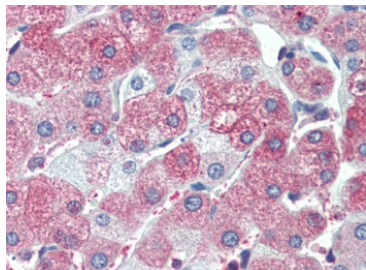
<b>Availability</b>	1-3 business days
<b>Species Reactivity</b>	Human
<b>Format</b>	Antigen affinity purified
<b>Host</b>	Goat
<b>Clonality</b>	Polyclonal (goat origin)
<b>Isotype</b>	Goat Ig
<b>Purity</b>	Antigen affinity
<b>Gene ID</b>	64374
<b>Localization</b>	Cytoplasmic
<b>Applications</b>	Western Blot : 1-3ug/ml IHC (FFPE) : 5ug/ml ELISA (peptide) LOD : 1:8000
<b>Limitations</b>	This SIL1 antibody is available for research use only.



Western blot testing of human kidney lysate with SIL1 antibody at 1ug/ml. Predicted molecular weight: ~53 kDa, but may be observed at higher molecular weights due to glycosylation.



IHC testing of FFPE human testis tissue with SIL1 antibody at 5ug/ml. Required HIER: steamed antigen retrieval with pH6 citrate buffer; AP-staining.



IHC testing of FFPE human liver tissue with SIL1 antibody at 5ug/ml. Required HIER: steamed antigen retrieval with pH6 citrate buffer; AP-staining.

## Description

Additional name(s) for this target protein: BiP-associated protein, BAP

## Application Notes

Optimal dilution of the SIL1 antibody should be determined by the researcher.

## Immunogen

Amino acids ELLGSVNSLLKELR were used as the immunogen for this SIL1 antibody.

## Storage

Aliquot and store the SIL1 antibody at -20oC.