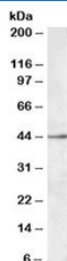


## SIGLEC8 Antibody (R36114)

Catalog No.	Formulation	Size
R36114-100UG	0.5 mg/ml in 1X TBS, pH7.3, with 0.5% BSA (US sourced) and 0.02% sodium azide	100 ug

[Bulk quote request](#)

Availability	1-3 business days
Species Reactivity	Human
Format	Antigen affinity purified
Host	Goat
Clonality	Polyclonal (goat origin)
Isotype	Goat Ig
Purity	Antigen affinity
UniProt	Q9NYZ4
Gene ID	27181
Applications	Western Blot : 0.3-1ug/ml ELISA (peptide) LOD : 1:32000
Limitations	This SIGLEC8 antibody is available for research use only.



Western blot testing of MOLT4 lysate with SIGLEC8 antibody at 0.3ug/ml. Predicted molecular weight: ~54/44kDa (isoforms 1/2).

### Description

Additional name(s) for this target protein: Sialic acid binding Ig-like lectin 8

### Application Notes

Optimal dilution of the SIGLEC8 antibody should be determined by the researcher.

## Immunogen

Amino acids SYKSQLNYKTKQ were used as the immunogen for this SIGLEC8 antibody. This sequence is common to isoforms 1 and 2.

## Storage

Aliquot and store the SIGLEC8 antibody at -20oC.