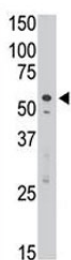


SIGLEC7 Antibody (F40104)

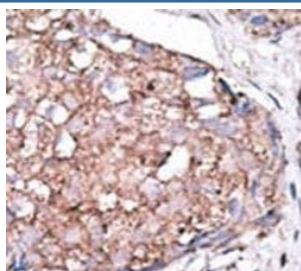
Catalog No.	Formulation	Size
F40104-0.4ML	In 1X PBS, pH 7.4, with 0.09% sodium azide	0.4 ml
F40104-0.08ML	In 1X PBS, pH 7.4, with 0.09% sodium azide	0.08 ml

[Bulk quote request](#)

Availability	1-3 business days
Species Reactivity	Human
Format	Antigen affinity purified
Clonality	Polyclonal (rabbit origin)
Isotype	Rabbit Ig
Purity	Antigen affinity
UniProt	Q9Y286
Applications	Western Blot : 1:1000 IHC (Paraffin) : 1:50-1:100
Limitations	This SIGLEC7 antibody is available for research use only.



SIGLEC7 antibody used in western blot to detect Dsiglec/SIGLEC7 in Jurkat cell lysate



IHC analysis of FFPE human hepatocarcinoma stained with the SIGLEC7 antibody

Description

SIGLECs are cell surface proteins of the Ig superfamily. SIGLEC7 is a putative adhesion molecule that mediates sialic-acid dependent binding to cells. Preferentially binds to alpha-2,3- and alpha-2,6-linked sialic acid. Also binds disialogangliosides (disialogalactosyl globoside, disialyl lactotetraosylceramide and disialyl GalNAc lactotetraosylceramide). The sialic acid recognition site may be masked by cis interactions with sialic acids on the same cell surface. In the immune response, may act as an inhibitory receptor upon ligand induced tyrosine phosphorylation by recruiting cytoplasmic phosphatase(s) via their SH2 domain(s) that block signal transduction through dephosphorylation of signaling molecules. Mediates inhibition of natural killer cells cytotoxicity. May play a role in hemopoiesis. Inhibits differentiation of CD34+ cell precursors towards myelomonocytic cell lineage and proliferation of leukemic myeloid cells (in vitro). [UniProt]

Application Notes

The stated application concentrations are suggested starting amounts. Titration of the SIGLEC7 antibody may be required due to differences in protocols and secondary/substrate sensitivity.

Immunogen

A portion of amino acids 407-438 from the human protein was used as the immunogen for this SIGLEC7 antibody.

Storage

Aliquot the SIGLEC7 antibody and store frozen at -20oC or colder. Avoid repeated freeze-thaw cycles.