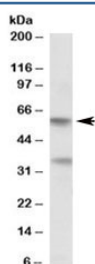


## SIGLEC6 Antibody (R34698)

Catalog No.	Formulation	Size
R34698-100UG	0.5 mg/ml in 1X TBS, pH7.3, with 0.5% BSA (US sourced) and 0.02% sodium azide	100 ug

[Bulk quote request](#)

Availability	1-3 business days
Species Reactivity	Human
Format	Antigen affinity purified
Host	Goat
Clonality	Polyclonal (goat origin)
Isotype	Goat Ig
Purity	Antigen affinity
Gene ID	946
Applications	Western Blot : 0.5-1.5ug/ml ELISA (peptide) LOD : 1:16000
Limitations	This SIGLEC6 antibody is available for research use only.



Western blot testing of human placenta lysate with SIGLEC6 antibody at 0.5ug/ml.  
Predicted molecular weight: ~50kDa, routinely observed from 50~60kDa.

## Description

Additional name(s) for this target protein: Sialic acid binding Ig-like lectin 6, CD327, CD33L, CD33L1, CDw327

## Application Notes

Optimal dilution of the SIGLEC6 antibody should be determined by the researcher.

## Immunogen

Amino acids KWMKYGYTSSK were used as the immunogen for this SIGLEC6 antibody.

## **Storage**

Aliquot and store the SIGLEC6 antibody at -20oC.