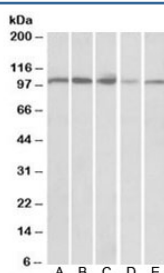


## SIDT1 Antibody (R35612)

Catalog No.	Formulation	Size
R35612-100UG	0.5 mg/ml in 1X TBS, pH7.3, with 0.5% BSA (US sourced) and 0.02% sodium azide	100 ug

[Bulk quote request](#)

<b>Availability</b>	1-3 business days
<b>Species Reactivity</b>	Human, Mouse, Rat
<b>Format</b>	Antigen affinity purified
<b>Host</b>	Goat
<b>Clonality</b>	Polyclonal (goat origin)
<b>Isotype</b>	Goat Ig
<b>Purity</b>	Antigen affinity
<b>Gene ID</b>	54847
<b>Applications</b>	Western Blot : 0.3-1ug/ml ELISA (peptide) LOD : 1:32000
<b>Limitations</b>	This SIDT1 antibody is available for research use only.



Western blot of human spleen (A), human thymus (B), mouse spleen (C), mouse thymus (D) and rat thymus (E) lysates with SIDT1 antibody at 0.3ug/ml. Predicted molecular weight: ~94kDa.



Western blot testing of human cerebellum lysate with SIDT1 antibody at 0.3ug/ml. Predicted molecular weight: ~94kDa.

## Description

Additional name(s) for this target protein: SID1 transmembrane family, member 1

## Application Notes

Optimal dilution of the SIDT1 antibody should be determined by the researcher.

## Immunogen

Amino acids RFQRKSIDGSFSGSN were used as the immunogen for this SIDT1 antibody.

## Storage

Aliquot and store the SIDT1 antibody at -20oC.