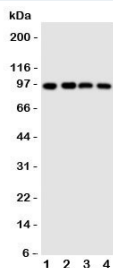


## SIDT1 Antibody (R31226)

Catalog No.	Formulation	Size
R31226	0.5mg/ml if reconstituted with 0.2ml sterile DI water	100 ug

[Bulk quote request](#)

<b>Availability</b>	1-3 business days
<b>Species Reactivity</b>	Human
<b>Format</b>	Antigen affinity purified
<b>Host</b>	Rabbit
<b>Clonality</b>	Polyclonal (rabbit origin)
<b>Isotype</b>	Rabbit IgG
<b>Purity</b>	Antigen affinity
<b>Buffer</b>	Lyophilized from 1X PBS with 2.5% BSA and 0.025% sodium azide/thimerosal
<b>UniProt</b>	Q9NXL6
<b>Applications</b>	Western Blot : 0.5-1ug/ml
<b>Limitations</b>	This SIDT1 antibody is available for research use only.



Western blot testing of SIDT1 antibody and Lane 1: HeLa; 2: COLO320; 3: SW620; 4: HT1080 cell lysate

## Description

SID1 transmembrane family member 1, also called SID1, is a protein which in humans is encoded by the SIDT1 gene. The protein encoded by this gene links to HGNC-curated gene family pages. The gene was assigned to human chromosome 3q13.31. This protein likely plays an important role in RNA transmembrane transporter activity.

## Application Notes

The stated application concentrations are suggested starting amounts. Titration of the SIDT1 antibody may be required

due to differences in protocols and secondary/substrate sensitivity.

## **Immunogen**

An amino acid sequence from the N-terminus of human SID1 transmembrane family member 1 (RRDPFDAARGADFDHVY) was used as the immunogen for this SIDT1 antibody.

## **Storage**

After reconstitution, the SIDT1 antibody can be stored for up to one month at 4oC. For long-term, aliquot and store at -20oC. Avoid repeated freezing and thawing.