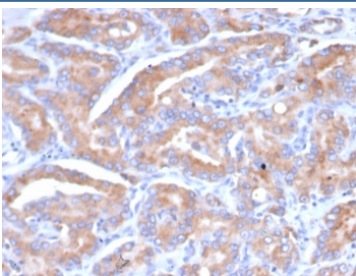


SI-CLP Antibody / CHID1 [clone CHID1/6368] (V4152)

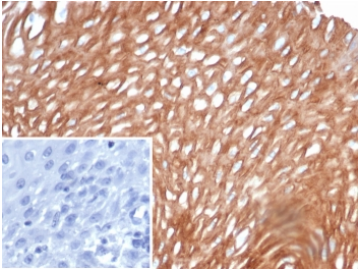
Catalog No.	Formulation	Size
V4152-100UG	0.2 mg/ml in 1X PBS with 0.1 mg/ml BSA (US sourced), 0.05% sodium azide	100 ug
V4152-20UG	0.2 mg/ml in 1X PBS with 0.1 mg/ml BSA (US sourced), 0.05% sodium azide	20 ug
V4152SAF-100UG	1 mg/ml in 1X PBS; BSA free, sodium azide free	100 ug

Bulk quote request

Availability	1-3 business days
Species Reactivity	Human
Format	Purified
Host	Mouse
Clonality	Monoclonal (mouse origin)
Isotype	Mouse IgG1, kappa
Clone Name	CHID1/6368
Purity	Protein A/G affinity
UniProt	Q9BWS9
Localization	Secreted, Cytoplasm
Applications	Immunohistochemistry (FFPE) : 1-2ug/ml for 30 minutes at RT
Limitations	This SI-CLP antibody is available for research use only.



IHC staining of FFPE human prostate tissue with SI-CLP antibody (clone CHID1/6368)
 HIER: boil tissue sections in pH 9 10mM Tris with 1mM EDTA for 20 min and allow to cool before testing.



IHC staining of FFPE human esophagus tissue with SI-CLP antibody (clone CHID1/6368) Inset: PBS used in place of primary Ab (secondary Ab negative control).
HIER: boil tissue sections in pH 9 10mM Tris with 1mM EDTA for 20 min and allow to cool before testing.

Description

SI-CLP (stabilin-1 interacting chitinase-like), also known as CHID1 (chitinase domain-containing protein 1), is a 393 amino acid secreted protein that belongs to the glycosyl hydrolase 18 family. SI-CLP interacts with STAB1 and localizes to lysosome in cells of monocytic, T, B and epithelial origin. SI-CLP is a saccharide- and LPS-binding protein with possible roles in pathogen sensing and endotoxin neutralization. Ligand-binding specificity relates to the length of the oligosaccharides, with preference for chitotetraose (in vitro). The SI-CLP protein is up-regulated by IL4/interleukin-4 and dexamethasone in the macrophages, and is also up-regulated by glucocorticoid. Existing as three alternatively spliced isoforms, the SI-CLP gene is conserved in chimpanzee, canine, bovine, mouse, rat, chicken, zebrafish, fruit fly, mosquito, *A. thaliana* and rice, and maps to human chromosome 11p15.5.

Application Notes

Optimal dilution of the SI-CLP antibody should be determined by the researcher.

Immunogen

Recombinant full-length human SI-CLP protein was used as the immunogen for the CHID1 antibody.

Storage

Aliquot the SI-CLP antibody and store frozen at -20°C or colder. Avoid repeated freeze-thaw cycles.