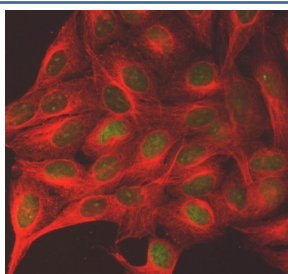


## Shugoshin 2 Antibody / SGO2 / SGOL2 (RQ7640)

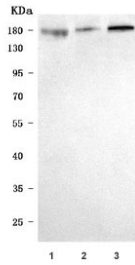
Catalog No.	Formulation	Size
RQ7640	0.5mg/ml if reconstituted with 0.2ml sterile DI water	100 ug

### Bulk quote request

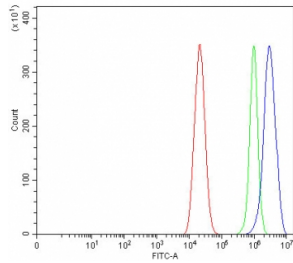
<b>Availability</b>	1-3 business days
<b>Species Reactivity</b>	Human
<b>Format</b>	Antigen affinity purified
<b>Host</b>	Rabbit
<b>Clonality</b>	Polyclonal (rabbit origin)
<b>Isotype</b>	Rabbit IgG
<b>Purity</b>	Antigen affinity purified
<b>Buffer</b>	Lyophilized from 1X PBS with 2% Trehalose
<b>UniProt</b>	Q562F6
<b>Localization</b>	Nuclear
<b>Applications</b>	Western Blot : 0.5-1ug/ml Immunofluorescence : 5ug/ml Flow Cytometry : 1-3ug/million cells Direct ELISA : 0.1-0.5ug/ml
<b>Limitations</b>	This Shugoshin 2 antibody is available for research use only.



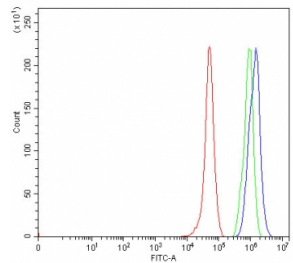
Immunofluorescent staining of FFPE human U-2 OS cells with Shugoshin 2 antibody (green) and Alpha Tubulin mAb (red). HIER: steam section in pH6 citrate buffer for 20 min.



Western blot testing of human 1) HEL, 2) PC-3 and 3) MOLT4 cell lysate with Shugoshin 2 antibody. Predicted molecular weight ~145 kDa, commonly observed at 145-190 kDa.



Flow cytometry testing of human Caco-2 cells with Shugoshin 2 antibody at 1ug/million cells (blocked with goat sera); Red=cells alone, Green=isotype control, Blue= Shugoshin 2 antibody.



Flow cytometry testing of human RT4 cells with Shugoshin 2 antibody at 1ug/million cells (blocked with goat sera); Red=cells alone, Green=isotype control, Blue= Shugoshin 2 antibody.

## Description

Shugoshin 2 (SGO2), also called Shugoshin-like 2 (SGOL2), is predicted to be involved in homologous chromosome segregation; meiotic sister chromatid cohesion; and mitotic sister chromatid segregation. Predicted to act upstream of or within meiotic nuclear division; positive regulation of maintenance of meiotic sister chromatid cohesion, centromeric; and protein localization. Located in chromosome, centromeric region and nuclear body. Part of mitotic cohesion complex.

## Application Notes

Optimal dilution of the Shugoshin 2 antibody should be determined by the researcher.

## Immunogen

E. coli-derived recombinant human protein (amino acids N660-E1011) was used as the immunogen for the Shugoshin 2 antibody.

## Storage

After reconstitution, the Shugoshin 2 antibody can be stored for up to one month at 4oC. For long-term, aliquot and store at -20oC. Avoid repeated freezing and thawing.

