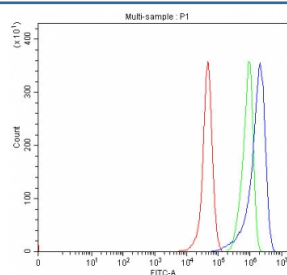


SHROOM4 Antibody / SHAP / KIAA1202 (RQ7625)

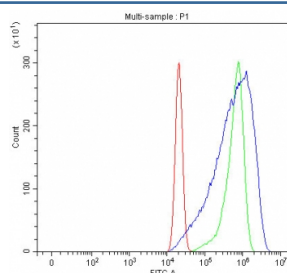
Catalog No.	Formulation	Size
RQ7625	0.5mg/ml if reconstituted with 0.2ml sterile DI water	100 ug

Bulk quote request

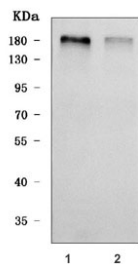
Availability	1-3 business days
Species Reactivity	Human
Format	Antigen affinity purified
Host	Rabbit
Clonality	Polyclonal (rabbit origin)
Isotype	Rabbit IgG
Purity	Antigen affinity purified
Buffer	Lyophilized from 1X PBS with 2% Trehalose
UniProt	Q9ULL8
Applications	Western Blot : 0.5-1ug/ml Flow Cytometry : 1-3ug/million cells Direct ELISA : 0.1-0.5ug/ml
Limitations	This SHROOM4 antibody is available for research use only.



Flow cytometry testing of human RT4 cells with SHROOM4 antibody at 1ug/million cells (blocked with goat sera); Red=cells alone, Green=isotype control, Blue= SHROOM4 antibody.



Flow cytometry testing of human U-2 OS cells with SHROOM4 antibody at 1ug/million cells (blocked with goat sera); Red=cells alone, Green=isotype control, Blue= SHROOM4 antibody.



Western blot testing of human 1) U-87 MG and 2) Caco-2 cell lysate with SHROOM4 antibody. Predicted molecular weight ~165 kDa.

Description

This gene encodes a member of the APX/Shroom family, which contain an N-terminal PDZ domain and a C-terminal ASD2 motif. The encoded protein may play a role in cytoskeletal architecture. Mutations in this gene have been linked to the X-linked Stocco dos Santos syndrome characterized by cognitive disabilities. Alternatively spliced transcript variants have been described.

Application Notes

Optimal dilution of the SHROOM4 antibody should be determined by the researcher.

Immunogen

E. coli-derived recombinant human protein (amino acids Y262-H928) was used as the immunogen for the SHROOM4 antibody.

Storage

After reconstitution, the SHROOM4 antibody can be stored for up to one month at 4°C. For long-term, aliquot and store at -20°C. Avoid repeated freezing and thawing.