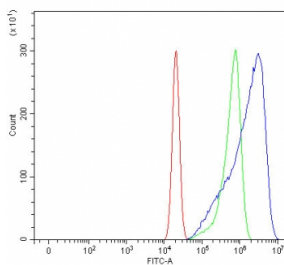


SHROOM2 Antibody / APXL (RQ7652)

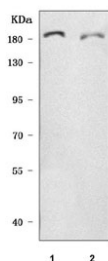
Catalog No.	Formulation	Size
RQ7652	0.5mg/ml if reconstituted with 0.2ml sterile DI water	100 ug

[Bulk quote request](#)

Availability	1-3 business days
Species Reactivity	Human
Format	Antigen affinity purified
Host	Rabbit
Clonality	Polyclonal (rabbit origin)
Isotype	Rabbit IgG
Purity	Antigen affinity purified
Buffer	Lyophilized from 1X PBS with 2% Trehalose
UniProt	Q13796
Applications	Western Blot : 0.5-1ug/ml Flow Cytometry : 1-3ug/million cells Direct ELISA : 0.1-0.5ug/ml
Limitations	This SHROOM2 antibody is available for research use only.



Flow cytometry testing of human U-2 OS cells with SHROOM2 antibody at 1ug/million cells (blocked with goat sera); Red=cells alone, Green=isotype control, Blue=SHROOM2 antibody.



Western blot testing of human 1) Caco-2 and 2) MCF7 cell lysate with SHROOM2 antibody. Predicted molecular weight ~176 kDa.

Description

Shroom family member 2 is a protein that in humans is encoded by the SHROOM2 gene. This gene represents the human homolog of *Xenopus laevis* apical protein (APX) gene, which is implicated in amiloride-sensitive sodium channel activity. It is expressed in endothelial cells and facilitates the formation of a contractile network within endothelial cells. Depletion of this gene results in an increase in endothelial sprouting, migration, and angiogenesis. This gene is highly expressed in the retina, and is a strong candidate for ocular albinism type 1 syndrome. Alternatively spliced transcript variants have been found for this gene.

Application Notes

Optimal dilution of the SHROOM2 antibody should be determined by the researcher.

Immunogen

E. coli-derived recombinant human protein (amino acids R427-H1138) was used as the immunogen for the SHROOM2 antibody.

Storage

After reconstitution, the SHROOM2 antibody can be stored for up to one month at 4°C. For long-term, aliquot and store at -20°C. Avoid repeated freezing and thawing.