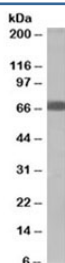


SHP2 Antibody / PTPN11 (R36361)

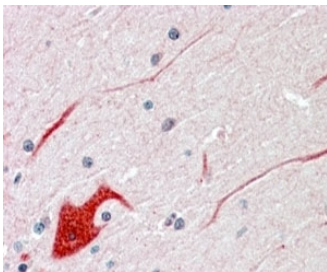
Catalog No.	Formulation	Size
R36361-100UG	0.5 mg/ml in 1X TBS, pH7.3, with 0.5% BSA (US sourced) and 0.02% sodium azide	100 ug

[Bulk quote request](#)

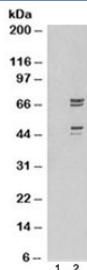
Availability	1-3 business days
Species Reactivity	Human, Mouse
Predicted Reactivity	Cow, Pig, Rat
Format	Antigen affinity purified
Host	Goat
Clonality	Polyclonal (goat origin)
Isotype	Goat Ig
Purity	Antigen affinity
Gene ID	5781
Applications	Western Blot : 2-4ug/ml Immunohistochemistry (FFPE) : 3-6ug/ml ELISA (peptide) LOD : 1:32000
Limitations	This SHP2 antibody is available for research use only.



Western blot testing of human muscle lysate with SHP2 antibody at 2ug/ml. Predicted molecular weight: ~68kDa.



IHC staining of FFPE human cerebellum with SHP2 antibody at 3.8ug/ml. HIER: steamed with pH6 citrate buffer, AP-staining.



Western blot of HEK293 lysate overexpressing PTPN11/SHP2 probed with SHP2 antibody (mock transfection in lane 1). Predicted molecular weight: ~68kDa, sometimes seen as a doublet.

Description

Additional name(s) for this target protein: SH2 domain containing protein tyrosine phosphatase 2; protein tyrosine phosphatase, non-receptor type 11 (Noonan syndrome 1); PTPN11

Application Notes

Optimal dilution of the SHP2 antibody should be determined by the researcher.

Immunogen

Amino acids YENVGLMQQQKSFR were used as the immunogen for this SHP2 antibody.

Storage

Aliquot and store the SHP2 antibody at -20°C.