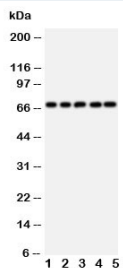


## SHP2 Antibody / PTPN11 (R30959)

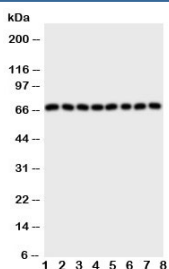
Catalog No.	Formulation	Size
R30959	0.5mg/ml if reconstituted with 0.2ml sterile DI water	100 ug

### Bulk quote request

<b>Availability</b>	1-3 business days
<b>Species Reactivity</b>	Human, Mouse, Rat
<b>Format</b>	Antigen affinity purified
<b>Host</b>	Rabbit
<b>Clonality</b>	Polyclonal (rabbit origin)
<b>Isotype</b>	Rabbit IgG
<b>Purity</b>	Antigen affinity
<b>Buffer</b>	Lyophilized from 1X PBS with 2.5% BSA and 0.025% sodium azide/thimerosal
<b>UniProt</b>	Q06124
<b>Applications</b>	Western Blot : 0.5-1ug/ml
<b>Limitations</b>	This SHP2 antibody is available for research use only.



Western blot testing of SHP2 antibody and rat samples 1: heart; 2: skeletal muscle; 3: brain; and human samples 4: HeLa; 5: A549 cell lysate. Predicted molecular weight: ~68 kDa.



Western blot testing of SHP2 antibody and rat samples 1: brain; 2: kidney; 3: heart; 4: skeletal muscle; and human samples 5: A431; 6: Jurkat; 7: HeLa; 8: U87 cell lysate. Predicted molecular weight: ~68 kDa.

## Description

PTPN11 (Tyrosine-protein phosphatase non-receptor type 11), also known as 'SH2 domain containing protein tyrosine phosphatase 2' (SHP2), is an enzyme that in humans is encoded by the PTPN11 gene. PTPN11 is a member of the protein tyrosine phosphatase (PTP) family. The open reading frame consists of 1,779 nucleotides potentially encoding a protein of 593 amino acids with a predicted molecular mass of 68 kD. PTPs are known to be signaling molecules that regulate a variety of cellular processes including cell growth, differentiation, mitotic cycle, and oncogenic transformation. This PTP contains two tandem Src homology-2 domains, which function as phospho-tyrosine binding domains and mediate the interaction of this PTP with its substrates. This PTP/SHP2 is widely expressed in most tissues and plays a regulatory role in various cell signaling events that are important for a diversity of cell functions, such as mitogenic activation, metabolic control, transcription regulation, and cell migration. Mutations in this gene are a cause of Noonan syndrome as well as acute myeloid leukemia.

## Application Notes

The stated application concentrations are suggested starting amounts. Titration of the SHP2 antibody may be required due to differences in protocols and secondary/substrate sensitivity.

## Immunogen

An amino acid sequence from the C-terminus of human SHP2 (RVYENVGLMQQQKSFR) was used as the immunogen for this SHP2 antibody.

## Storage

After reconstitution, the SHP2 antibody can be stored for up to one month at 4°C. For long-term, aliquot and store at -20°C. Avoid repeated freezing and thawing.