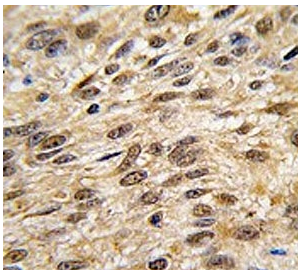


SHP-1 Antibody / PTPN6 (F54777)

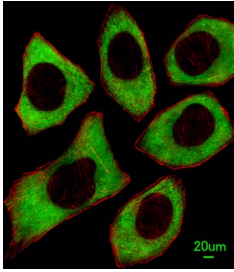
Catalog No.	Formulation	Size
F54777-0.4ML	In 1X PBS, pH 7.4, with 0.09% sodium azide	0.4 ml
F54777-0.08ML	In 1X PBS, pH 7.4, with 0.09% sodium azide	0.08 ml

[Bulk quote request](#)

Availability	1-3 business days
Species Reactivity	Human
Format	Purified
Host	Rabbit
Clonality	Polyclonal (rabbit origin)
Isotype	Rabbit Ig
Purity	Purified
UniProt	P29350
Localization	Cytoplasmic, nuclear
Applications	Immunofluorescence : 1:25 Immunohistochemistry (FFPE) : 1:25 Western Blot : 1:500-1:2000
Limitations	This SHP-1 antibody is available for research use only.



IHC testing of FFPE human lung carcinoma tissue with SHP-1 antibody. HIER: steam section in pH6 citrate buffer for 20 min and allow to cool prior to staining.



Immunofluorescent staining of human U-251 cells with SHP-1 antibody (green) and anti-Actin (red).



Western blot testing of human HL60 cell lysate with SHP-1 antibody. Predicted molecular weight ~68 kDa.

Description

PTPN6 is a member of the protein tyrosine phosphatase (PTP) family. PTPs are known to be signaling molecules that regulate a variety of cellular processes including cell growth, differentiation, mitotic cycle, and oncogenic transformation. N-terminal part of this PTP contains two tandem Src homolog (SH2) domains, which act as protein phospho-tyrosine binding domains, and mediate the interaction of this PTP with its substrates. This PTP is expressed primarily in hematopoietic cells, and functions as an important regulator of multiple signaling pathways in hematopoietic cells. This PTP has been shown to interact with, and dephosphorylate a wide spectrum of phospho-proteins involved in hematopoietic cell signaling.

Application Notes

The stated application concentrations are suggested starting points. Titration of the SHP-1 antibody may be required due to differences in protocols and secondary/substrate sensitivity.

Immunogen

A portion of amino acids 247-277 from the human protein was used as the immunogen for the SHP-1 antibody.

Storage

Aliquot the SHP-1 antibody and store frozen at -20°C or colder. Avoid repeated freeze-thaw cycles.