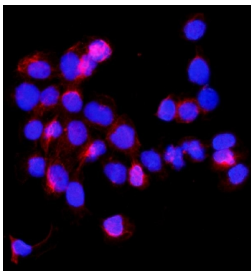


SHMT1 Antibody (RQ5763)

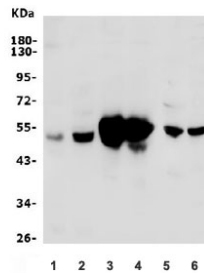
Catalog No.	Formulation	Size
RQ5763	0.5mg/ml if reconstituted with 0.2ml sterile DI water	100 ug

Bulk quote request

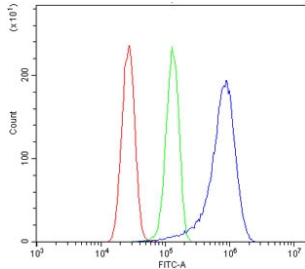
Availability	1-3 business days
Species Reactivity	Human, Mouse, Rat, Monkey
Format	Antigen affinity purified
Host	Rabbit
Clonality	Polyclonal (rabbit origin)
Isotype	Rabbit IgG
Purity	Affinity purified
Buffer	Lyophilized from 1X PBS with 2% Trehalose and 0.025% sodium azide
UniProt	P34896
Localization	Cytoplasmic
Applications	Western Blot : 0.5-1ug/ml Immunofluorescence : 2-4ug/ml Flow Cytometry : 1-3ug/million cells Direct ELISA : 0.1-0.5ug/ml
Limitations	This SHMT1 antibody is available for research use only.



Immunofluorescent staining of FFPE human A431 cells with SHMT1 antibody (red) and DAPI nuclear stain (blue). HIER: steam section in pH6 citrate buffer for 20 min.



Western blot testing of 1) human Jurkat, 2) human HeLa, 3) monkey liver, 4) monkey kidney, 5) rat kidney and 6) mouse ANA-1 lysate with SHMT1 antibody. Predicted molecular weight ~53 kDa.



Flow cytometry testing of human U-87 MG cells with SHMT1 antibody at 1ug/million cells (blocked with goat sera); Red=cells alone, Green=isotype control, Blue= SHMT1 antibody.

Description

This gene encodes the cytosolic form of serine hydroxymethyltransferase, a pyridoxal phosphate-containing enzyme that catalyzes the reversible conversion of serine and tetrahydrofolate to glycine and 5,10-methylene tetrahydrofolate. This reaction provides one-carbon units for synthesis of methionine, thymidylate, and purines in the cytoplasm. This gene is located within the Smith-Magenis syndrome region on chromosome 17. A pseudogene of this gene is located on the short arm of chromosome 1. Alternative splicing results in multiple transcript variants.

Application Notes

Optimal dilution of the SHMT1 antibody should be determined by the researcher.

Immunogen

Recombinant human protein (amino acids M1-S470) was used as the immunogen for the SHMT1 antibody.

Storage

After reconstitution, the SHMT1 antibody can be stored for up to one month at 4oC. For long-term, aliquot and store at -20oC. Avoid repeated freezing and thawing.