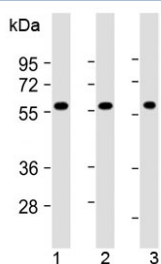


SHC2 Antibody / N-Terminal Region (F54203)

Catalog No.	Formulation	Size
F54203-0.2ML	In 1X PBS, pH 7.4, with 0.09% sodium azide	0.2 ml
F54203-0.05ML	In 1X PBS, pH 7.4, with 0.09% sodium azide	0.05 ml

[Bulk quote request](#)

Availability	1-3 business days
Species Reactivity	Human
Format	Antigen affinity purified
Host	Rabbit
Clonality	Polyclonal
Isotype	Rabbit Ig
Purity	Peptide affinity purified
UniProt	P98077
Applications	Western Blot : 1:2000
Limitations	This SHC2 antibody is available for research use only.



Western blot testing of human 1) cerebellum, 2) U-251 MG and 3) U-87 MG lysate with SHC2 antibody at 1:2000. Predicted molecular weight ~62 kDa.

Description

Signaling adapter that couples activated growth factor receptors to signaling pathway in neurons. Involved in the signal transduction pathways of neurotrophin-activated Trk receptors in cortical neurons (By similarity).

Application Notes

The stated application concentrations are suggested starting points. Titration of the SHC2 antibody may be required due to differences in protocols and secondary/substrate sensitivity.

Immunogen

A portion of amino acids 129-163 from the N-terminal region of human protein was used as the immunogen for the SHC2 antibody.

Storage

Aliquot the SHC2 antibody and store frozen at -20oC or colder. Avoid repeated freeze-thaw cycles.