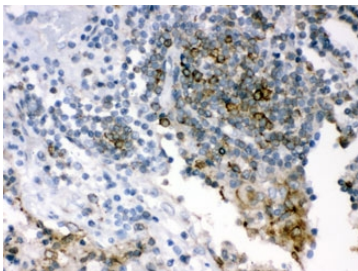


SHC Antibody / SHC1 / SHC transforming protein 1 (R32049)

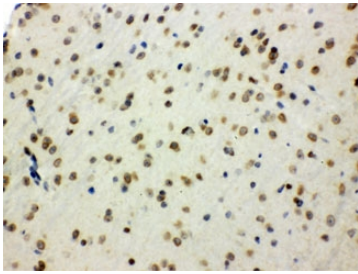
Catalog No.	Formulation	Size
R32049	0.5mg/ml if reconstituted with 0.2ml sterile DI water	100 ug

Bulk quote request

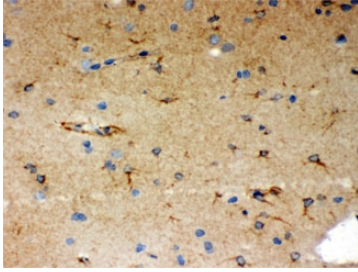
Availability	1-3 business days
Species Reactivity	Human, Mouse, Rat
Format	Antigen affinity purified
Host	Rabbit
Clonality	Polyclonal (rabbit origin)
Isotype	Rabbit IgG
Purity	Antigen affinity
Buffer	Lyophilized from 1X PBS with 2.5% BSA and 0.025% sodium azide
UniProt	P29353
Localization	Cytoplasmic, membranous
Applications	Western Blot : 0.1-0.5ug/ml Immunohistochemistry (FFPE) : 0.5-1ug/ml Immunohistochemistry (Frozen) : 0.5-1ug/ml
Limitations	This SHC antibody is available for research use only.



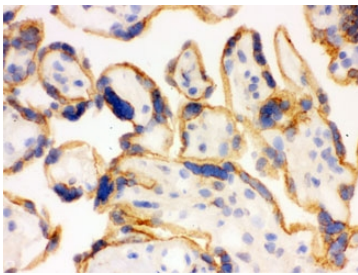
IHC testing of FFPE human lung cancer using SHC antibody. HIER: Boil the paraffin sections in pH 6, 10mM citrate buffer for 20 minutes and allow to cool prior to staining.



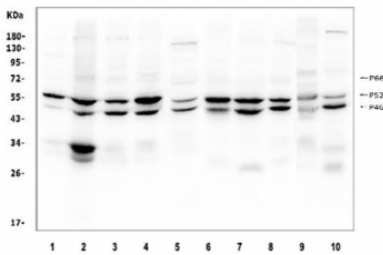
IHC testing of FFPE mouse brain using SHC antibody. HIER: Boil the paraffin sections in pH 6, 10mM citrate buffer for 20 minutes and allow to cool prior to staining.



IHC testing of FFPE rat brain using SHC antibody. HIER: Boil the paraffin sections in pH 6, 10mM citrate buffer for 20 minutes and allow to cool prior to staining.



IHC testing of frozen human placenta using SHC antibody. HIER: Boil the paraffin sections in pH 6, 10mM citrate buffer for 20 minutes and allow to cool prior to staining.



Western blot testing of human 1) A431, 2) HeLa, 3) HepG2, 4) Jurkat 5) K562, 6) ThP-1, 7) rat C6, 8) mouse thymus, 9) mouse RAW264.7 and 10) mouse NIH 3T3 lysate using SHC antibody. Expected molecular weight: 46-66 kDa (three isoforms).

Description

SHC, also known as SHC1 (SHC-transforming protein 1) or SHCA, is a protein that in humans is encoded by the SHC1 gene. SCOP classifies the 3D structure as belonging to the SH2 domain family. This gene encodes three main isoforms that differ in activities and subcellular location. While all three are adapter proteins in signal transduction pathways, the longest (p66Shc) may be involved in regulating life span and the effects of reactive oxygen species. The other two isoforms, p52Shc and p46Shc, link activated receptor tyrosine kinases to the Ras pathway by recruitment of the GRB2/SOS complex. p66Shc is not involved in Ras activation. Unlike the other two isoforms, p46Shc is targeted to the mitochondrial matrix. Several transcript variants encoding different isoforms have been found for this gene.

Application Notes

Optimal dilution of the SHC antibody should be determined by the researcher.

Immunogen

Amino acids VDPEGVVRTKDRHFESVSHLISYHMDNHL of human SHC were used as the immunogen for the SHC antibody.

Storage

After reconstitution, the SHC antibody can be stored for up to one month at 4°C. For long-term, aliquot and store at -20°C. Avoid repeated freezing and thawing.